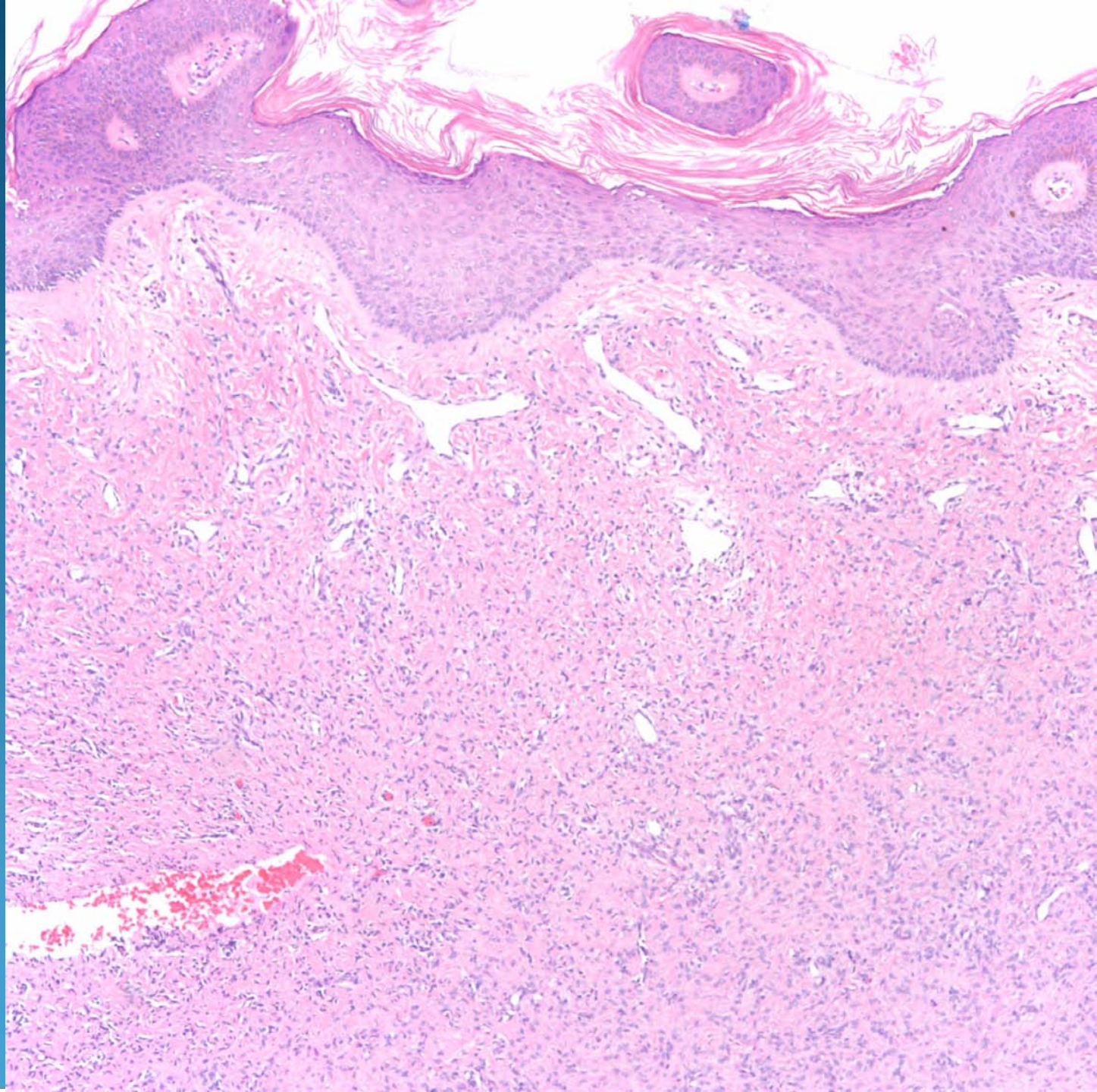
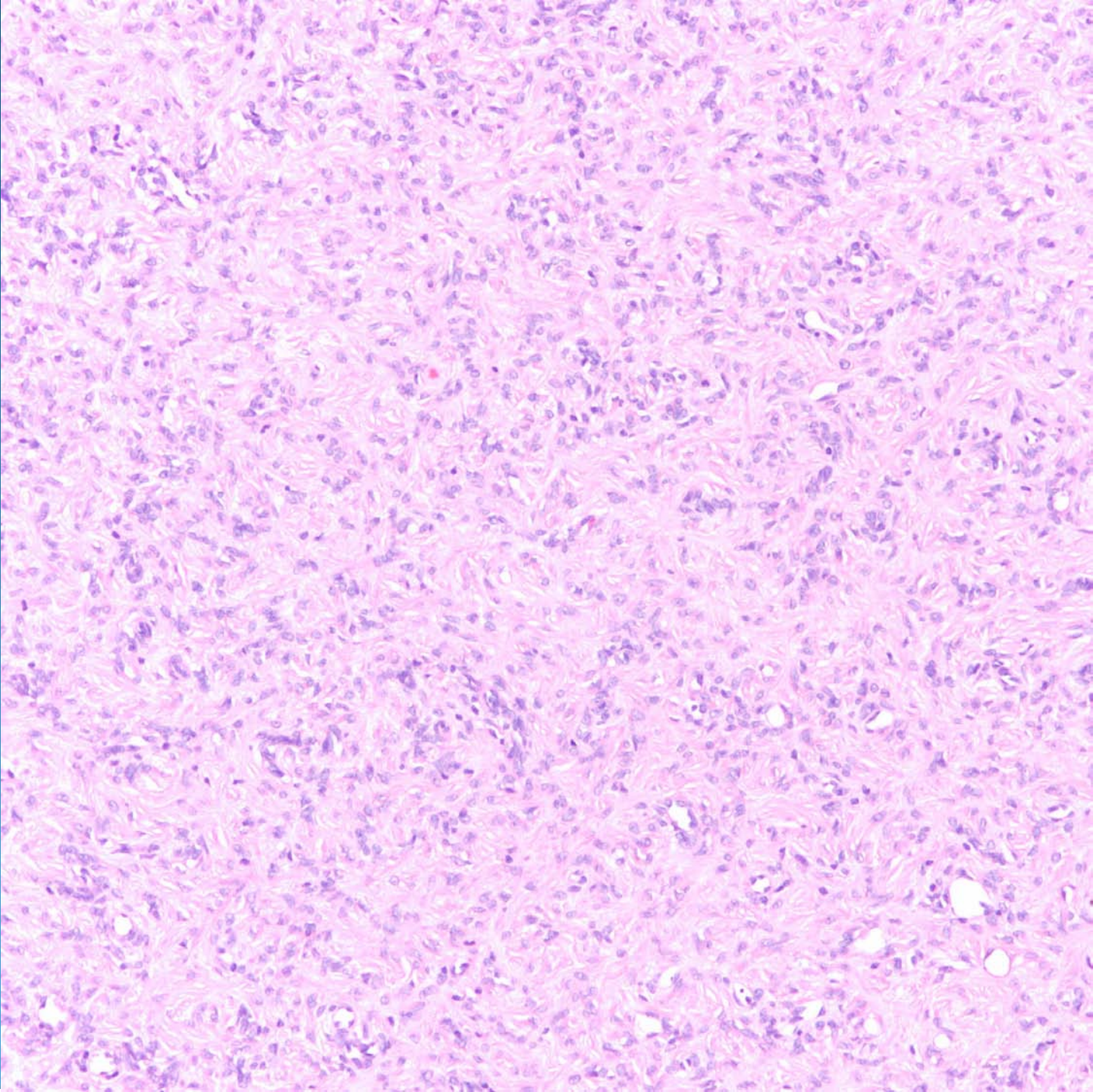


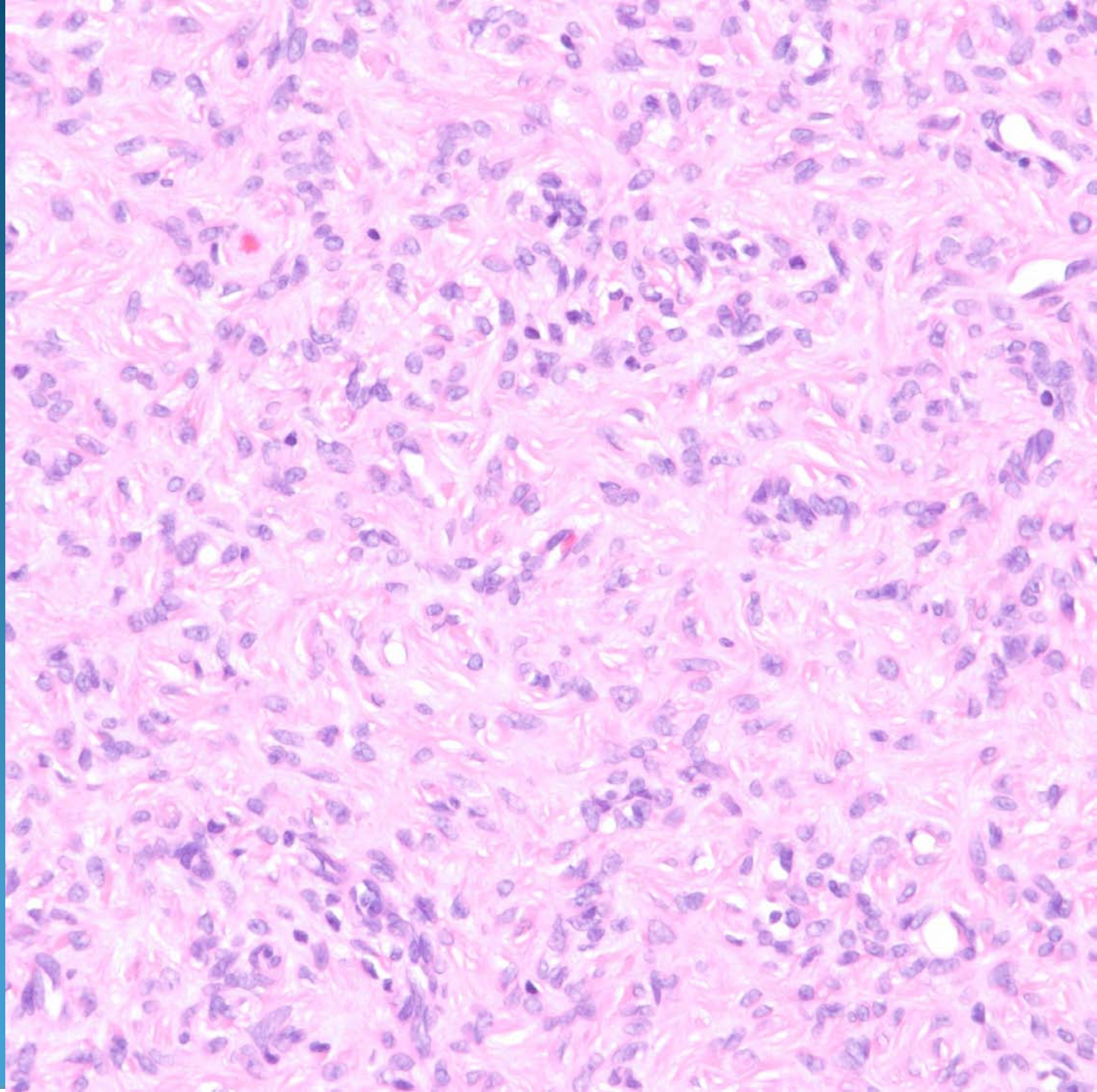
# Dermatopathology Slide Review Part 68

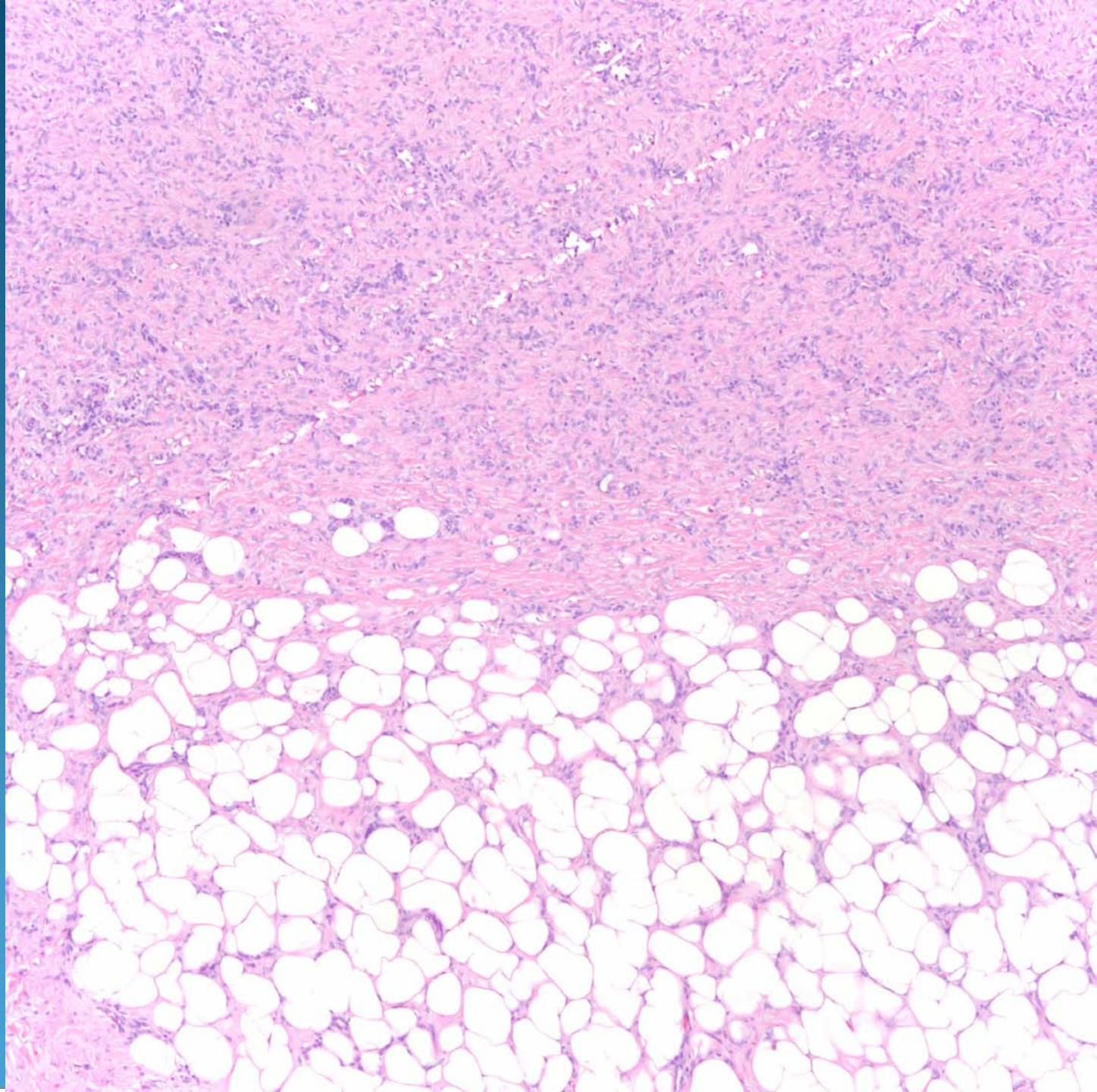
Paul K. Shitabata, M.D.  
Dermatopathology Institute

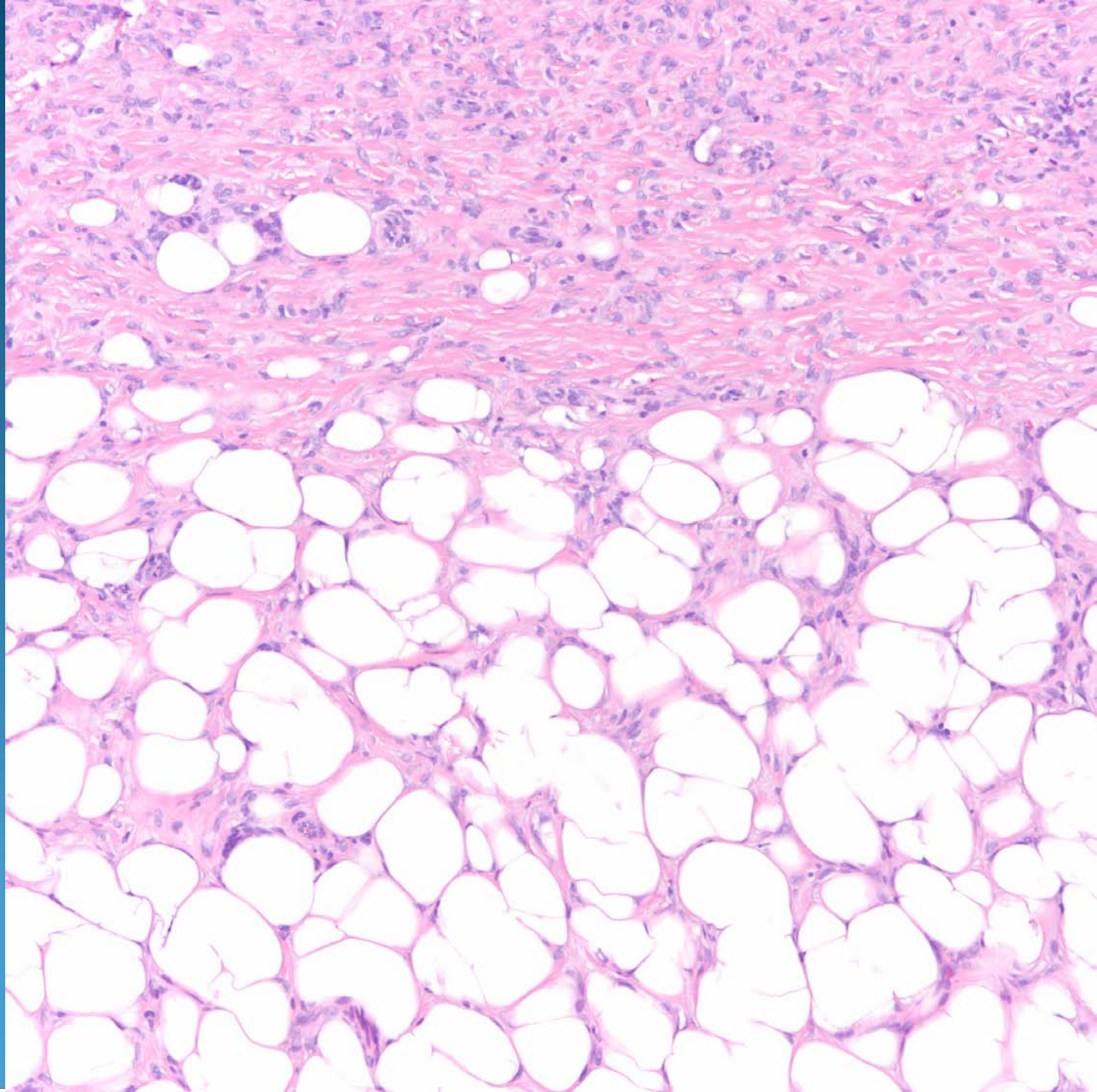






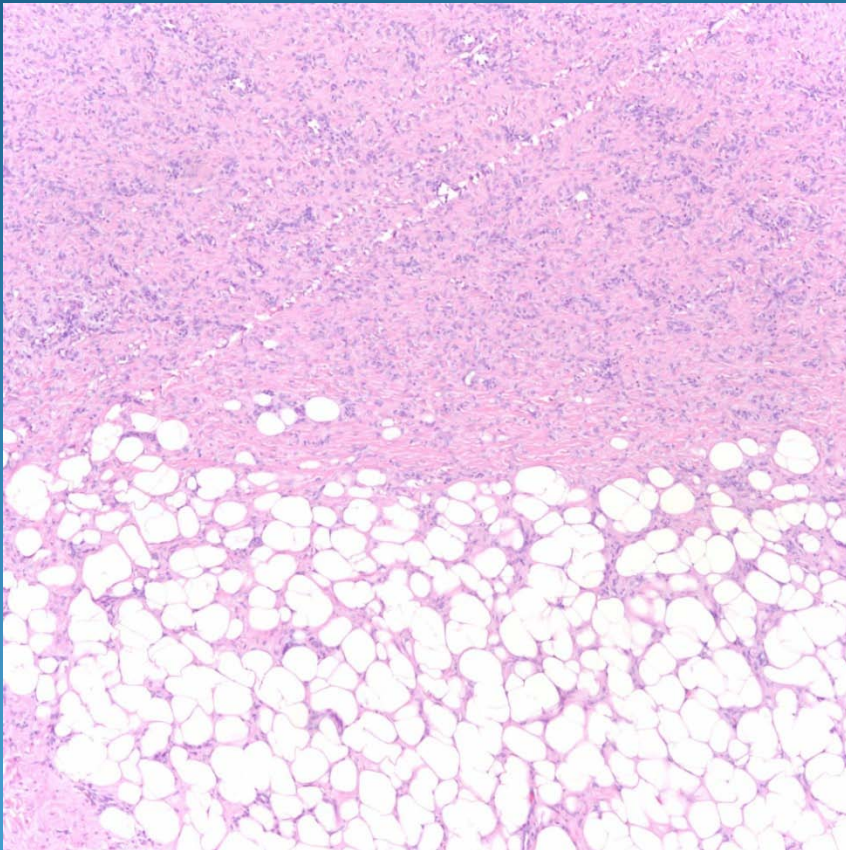




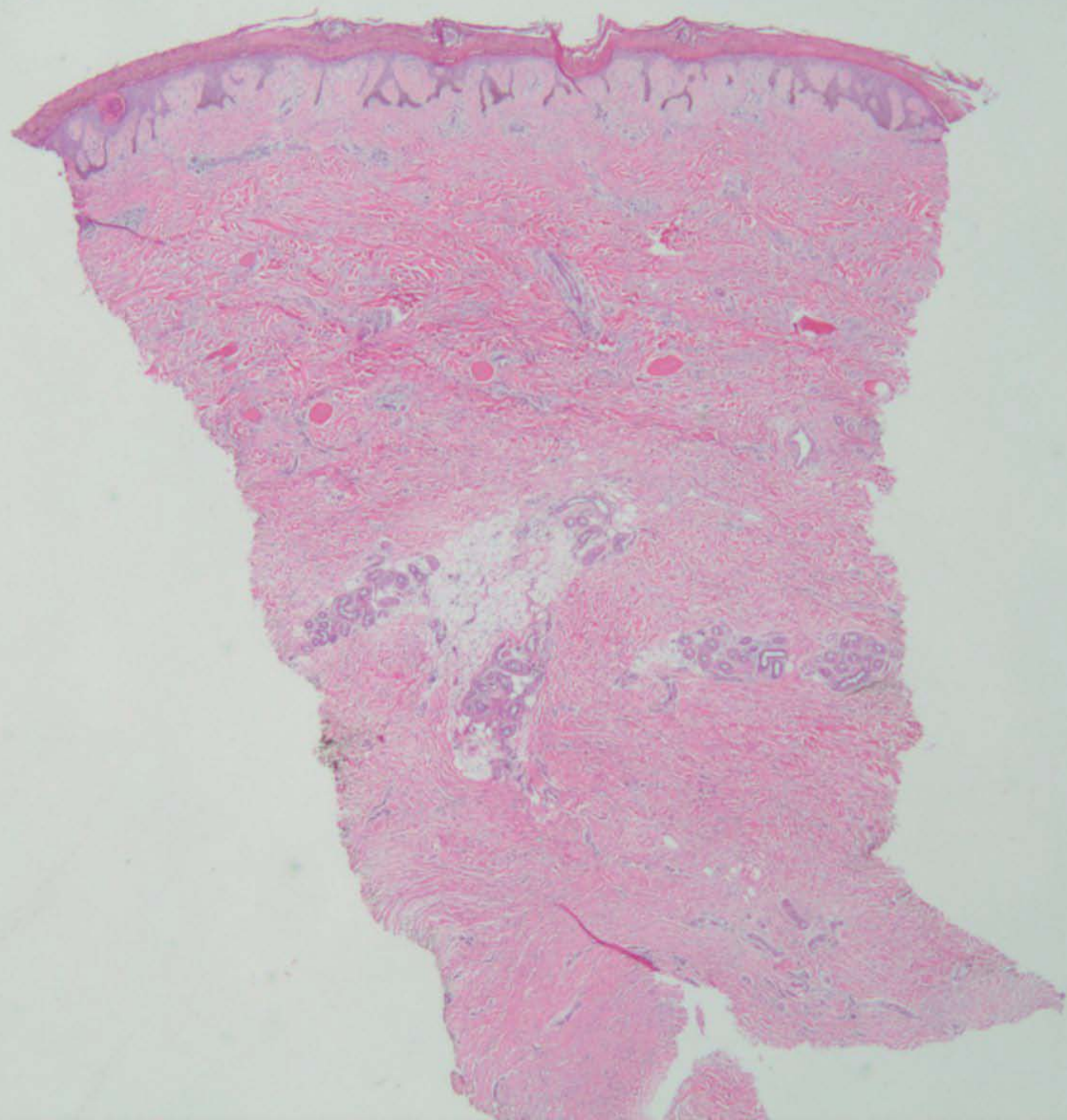


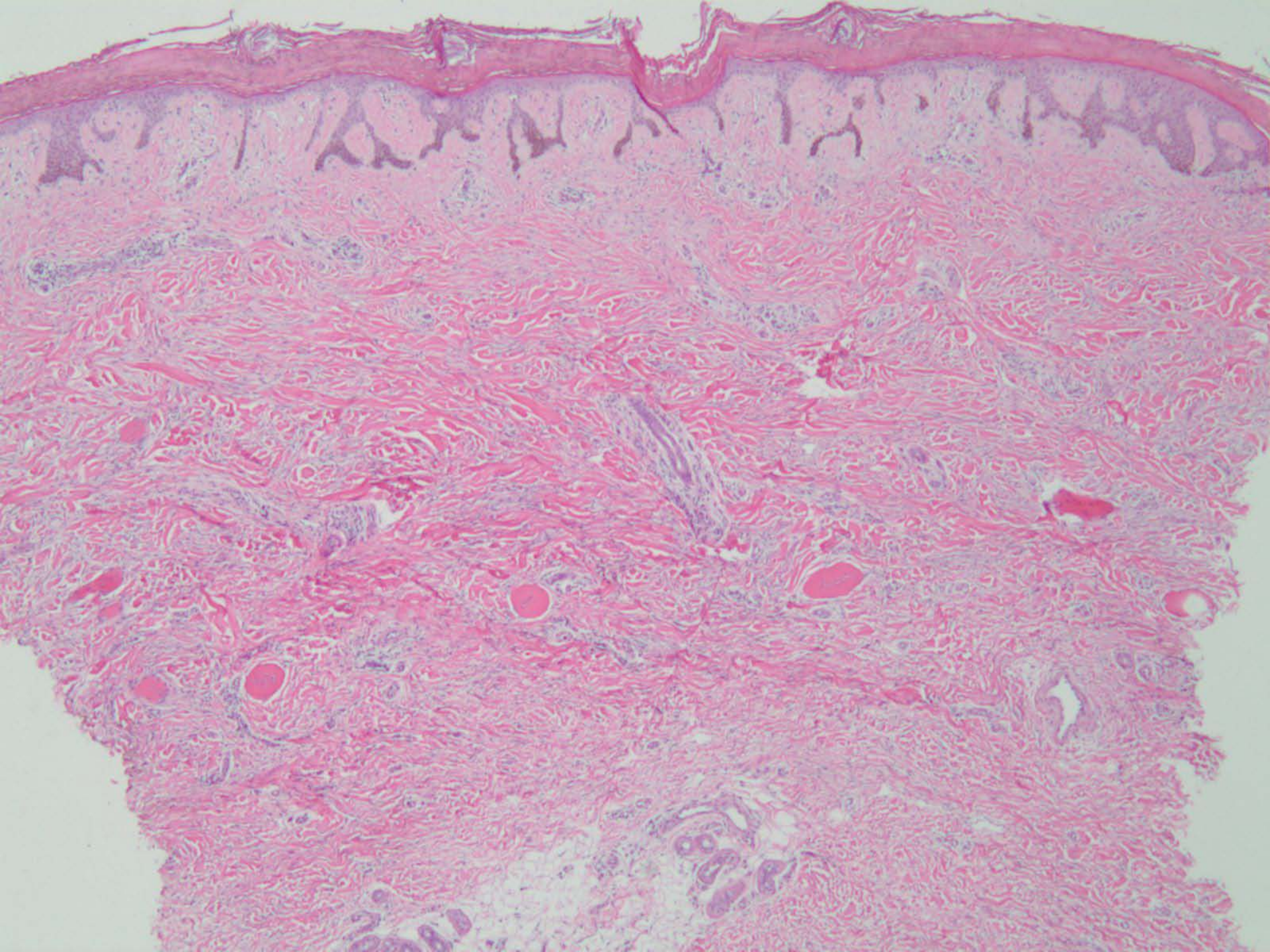
# Dermatofibroma

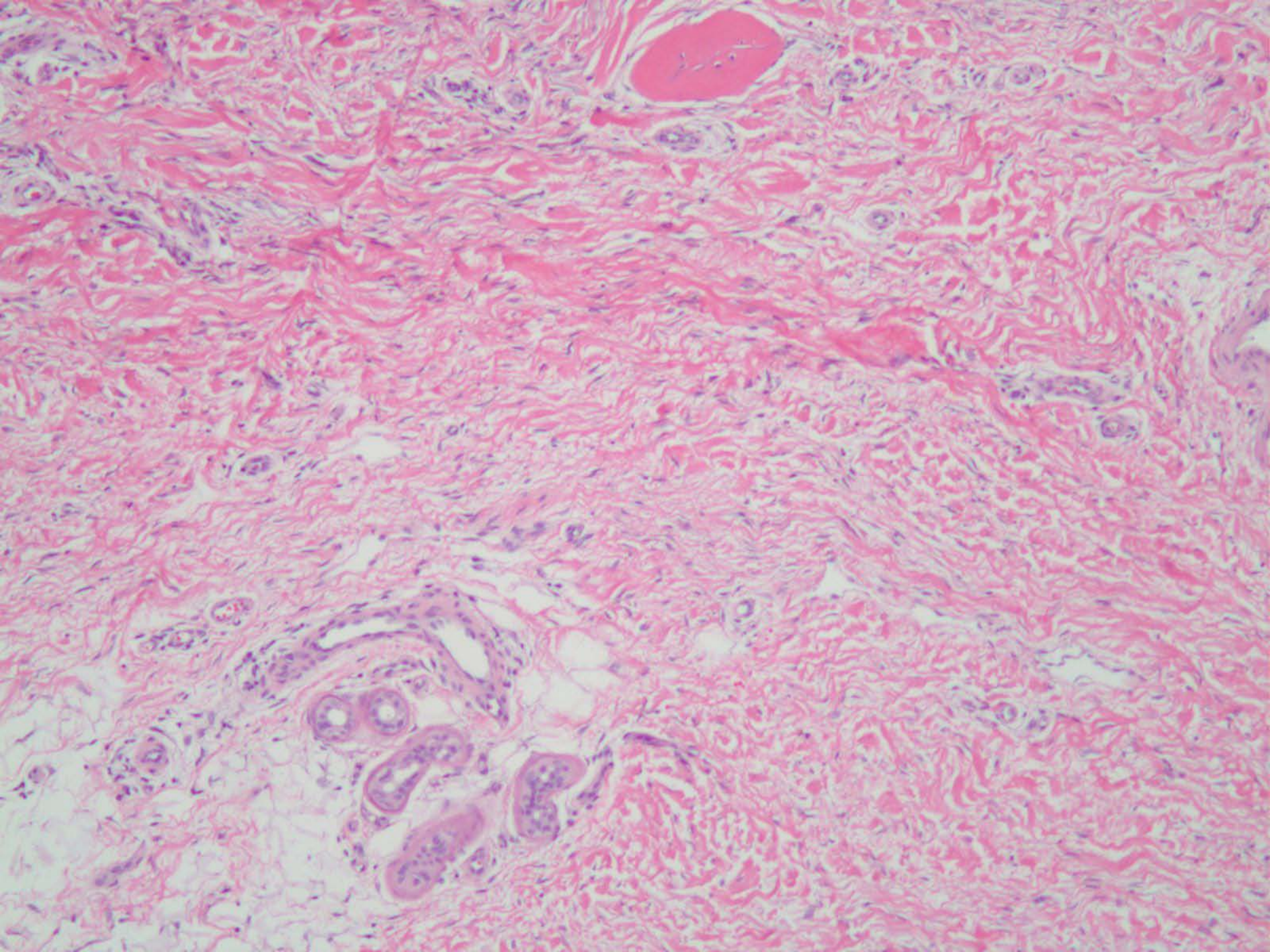
# Pearls

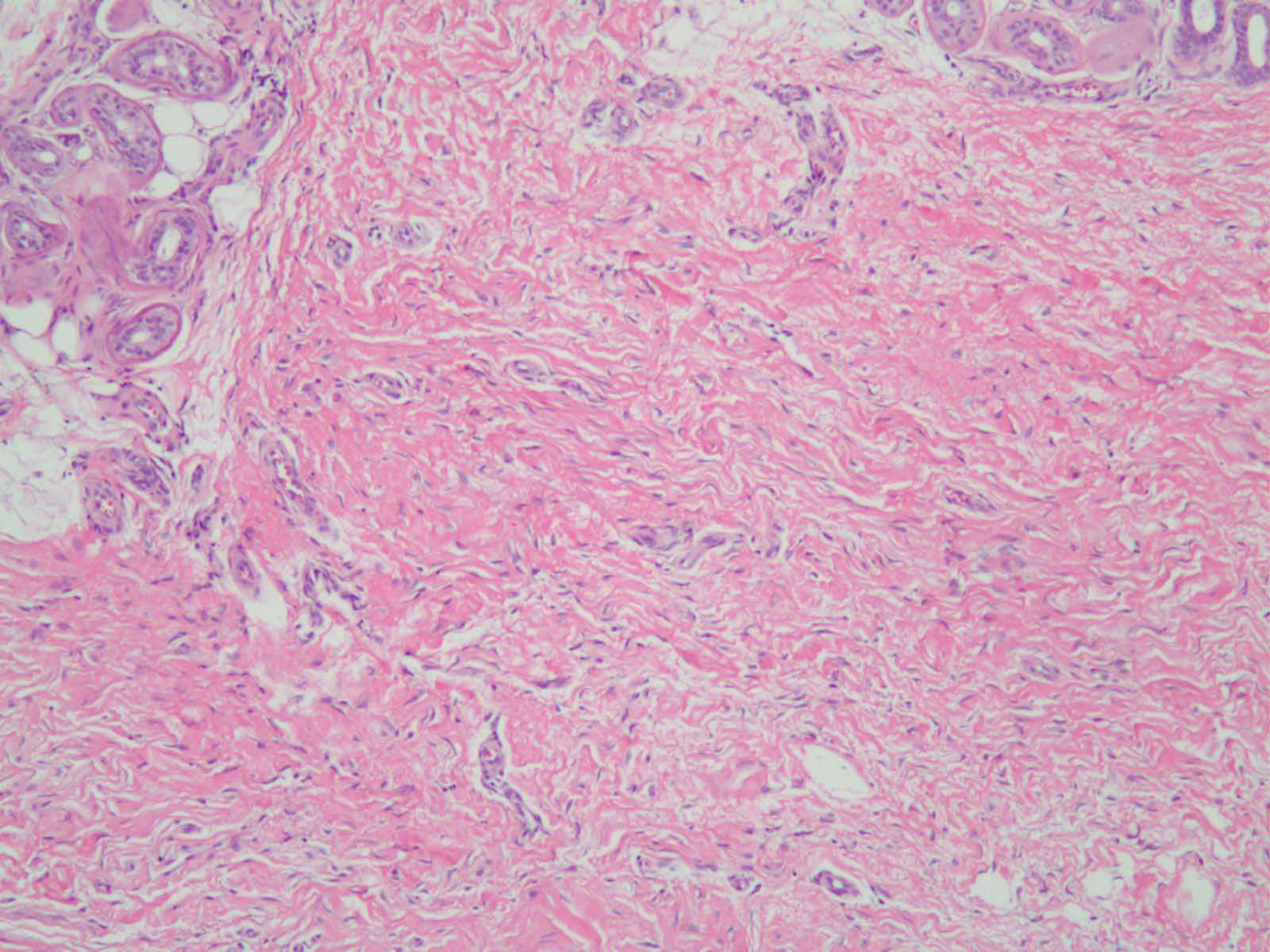


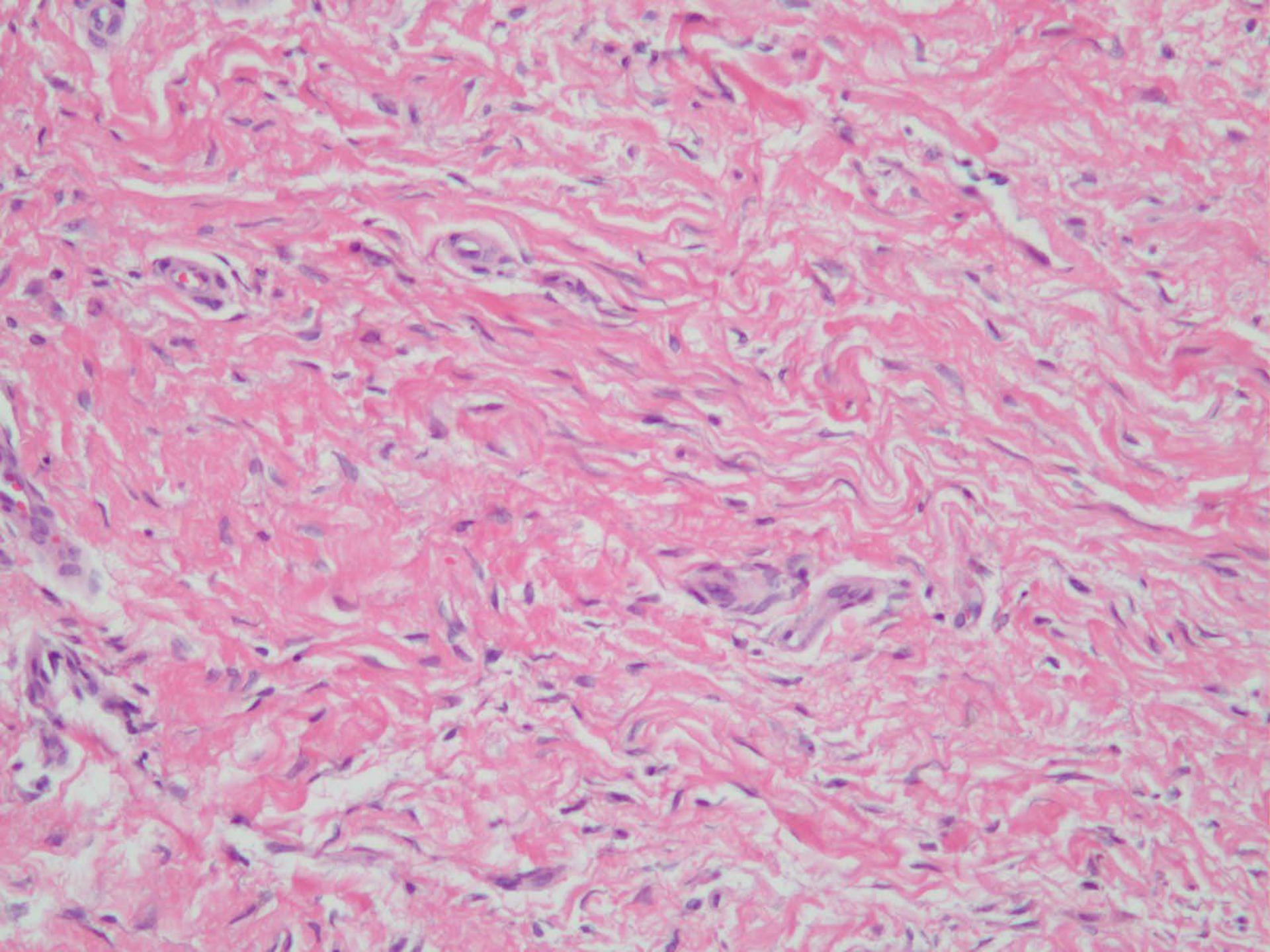
- Cellular spindle cell tumor in dermis separated from epidermis by a Grenz zone
- May see hyperplastic epidermis with follicular induction
- Note the “root-like” extension of the spindle cells with the fat, contrasting with the “Swiss-cheese” pattern of spindle cells and fat with DFSP

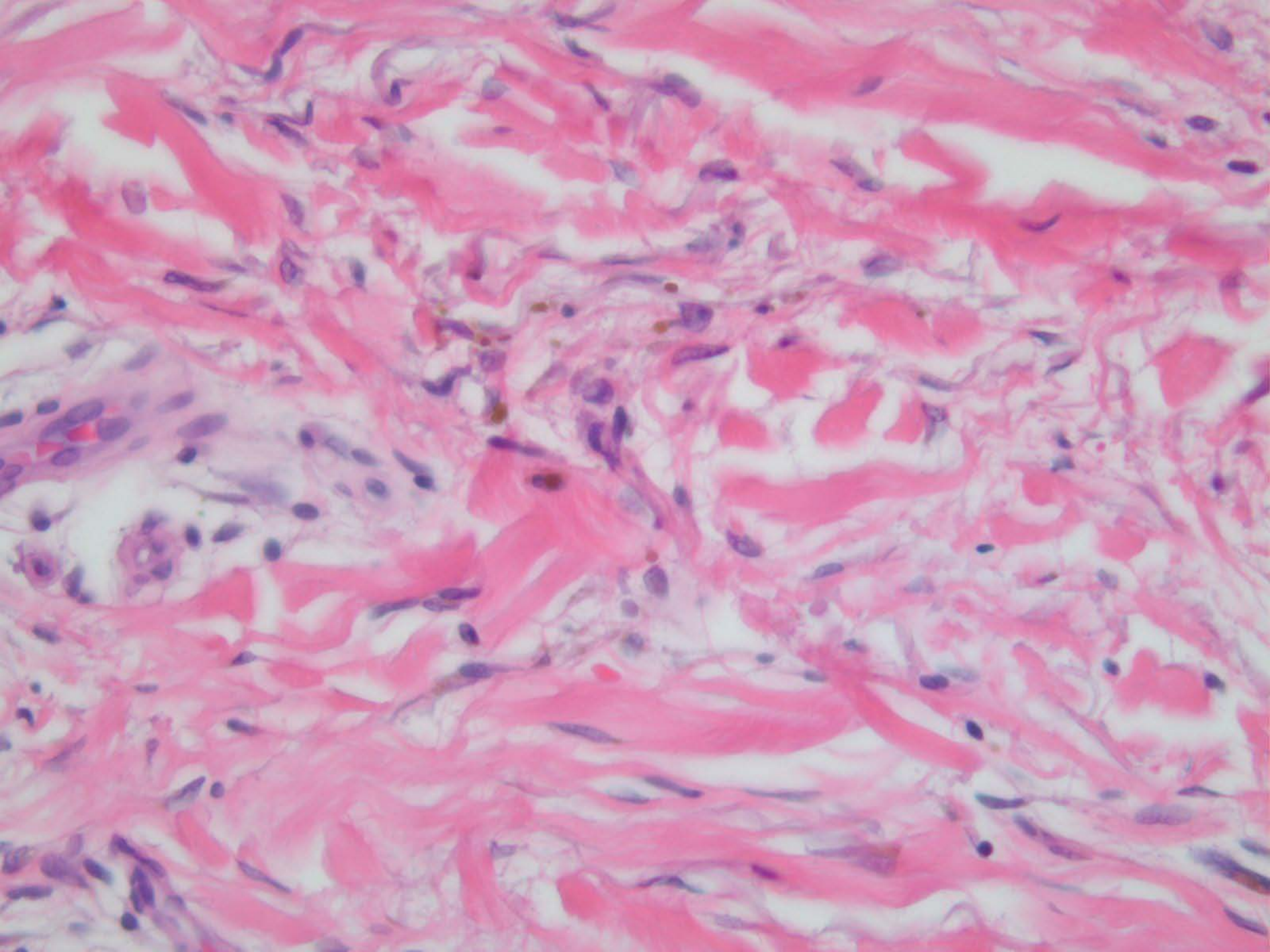






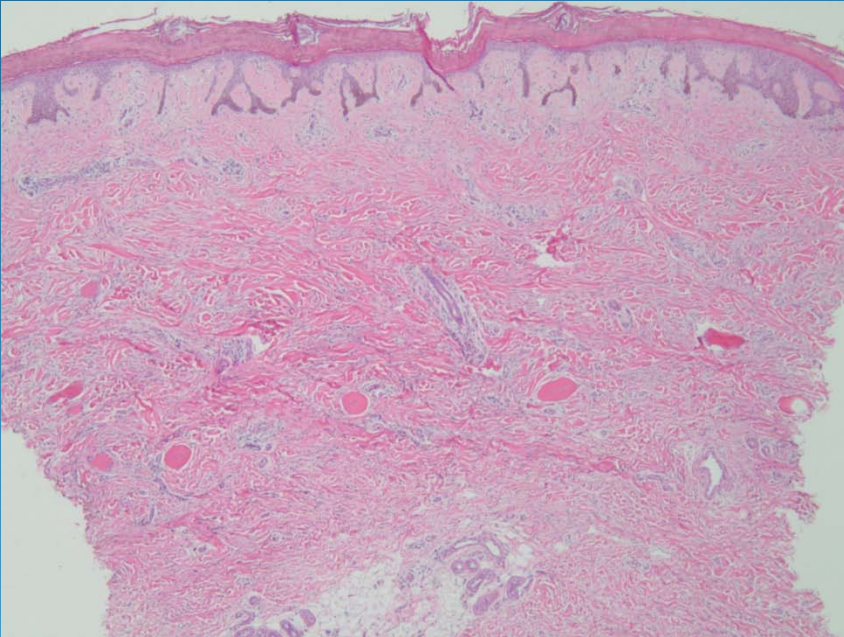




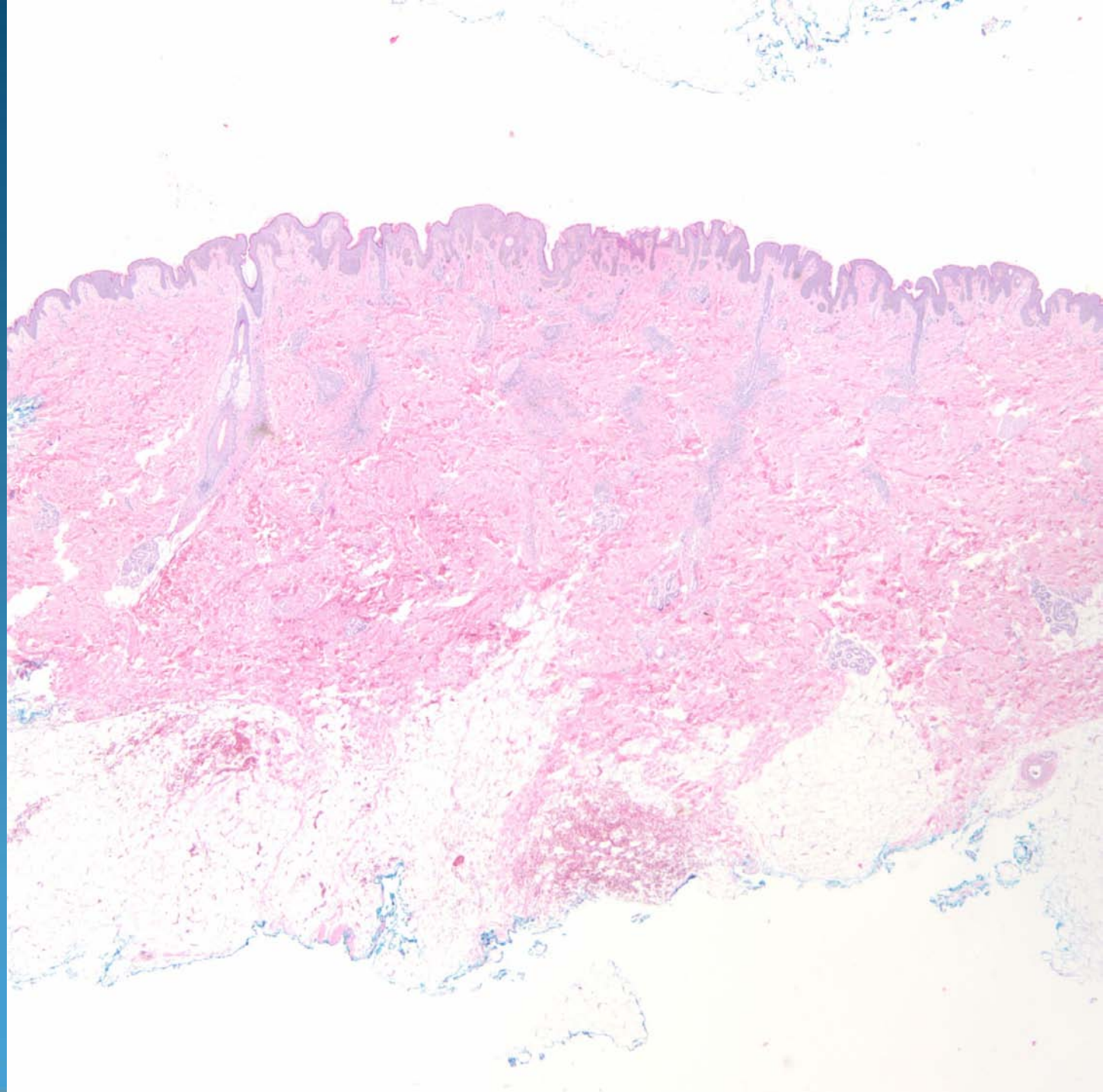


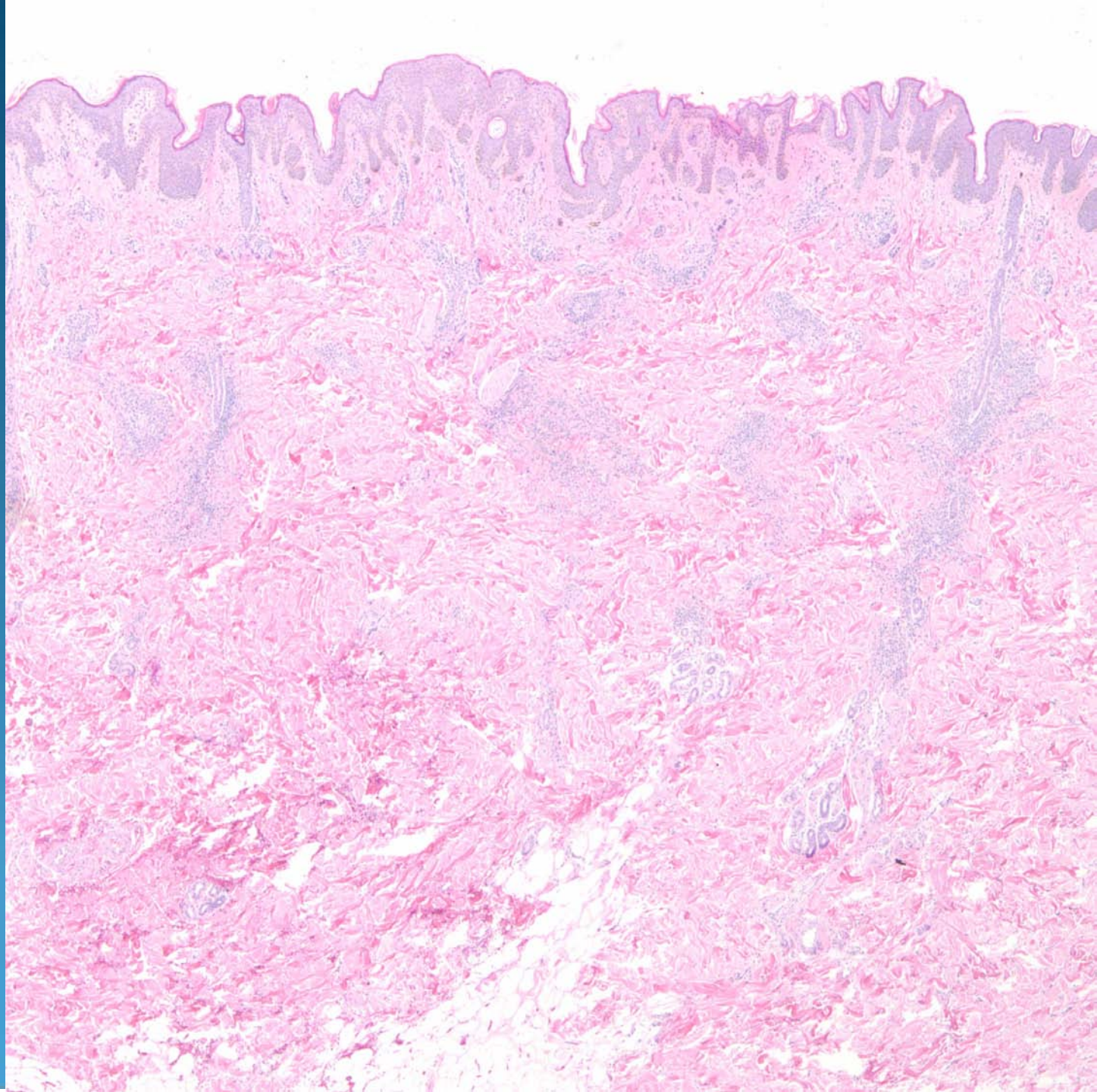
# Nephrogenic Systemic Fibrosis (Nephrogenic Fibrosing Dermopathy)

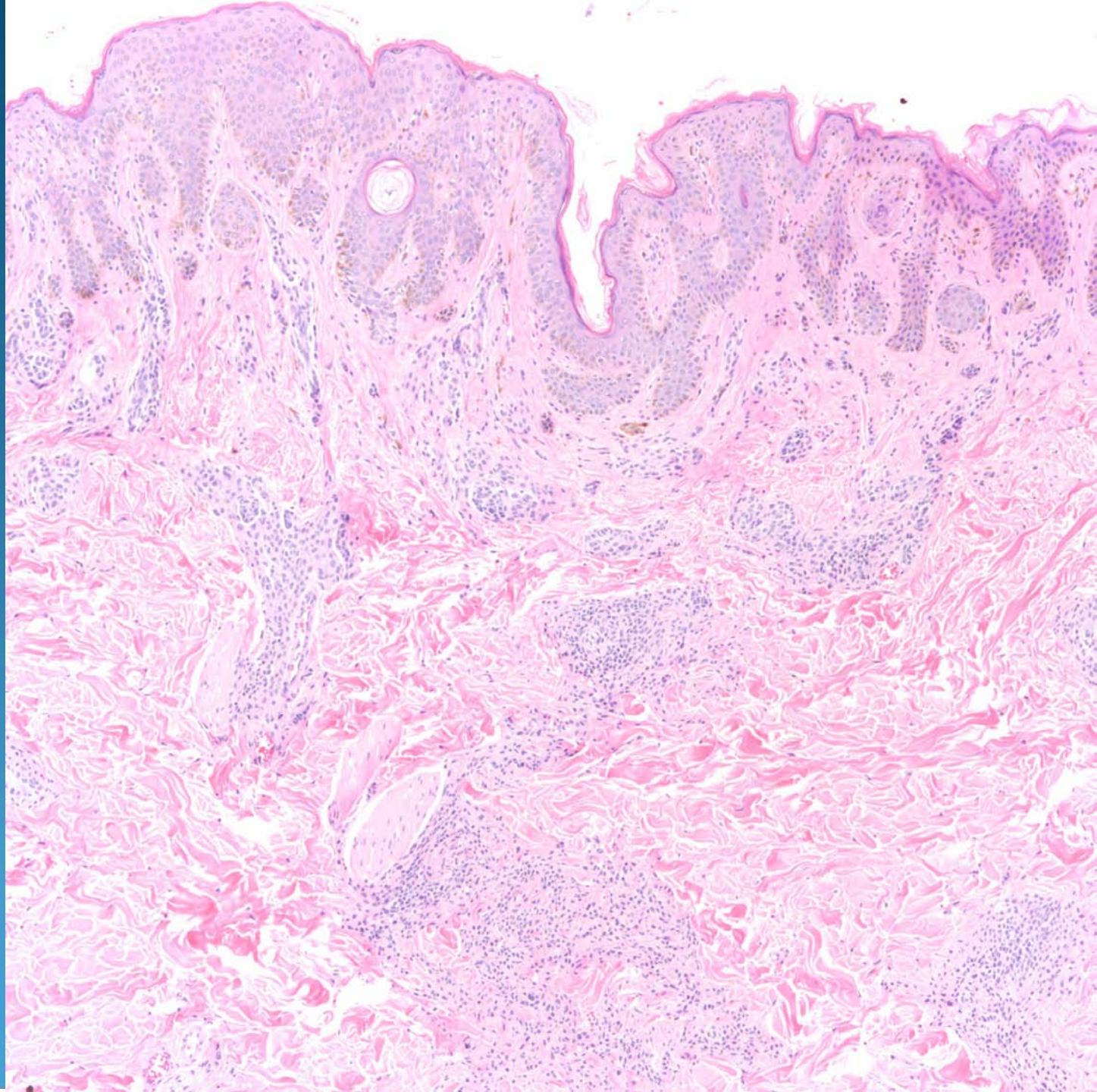
# Pearls

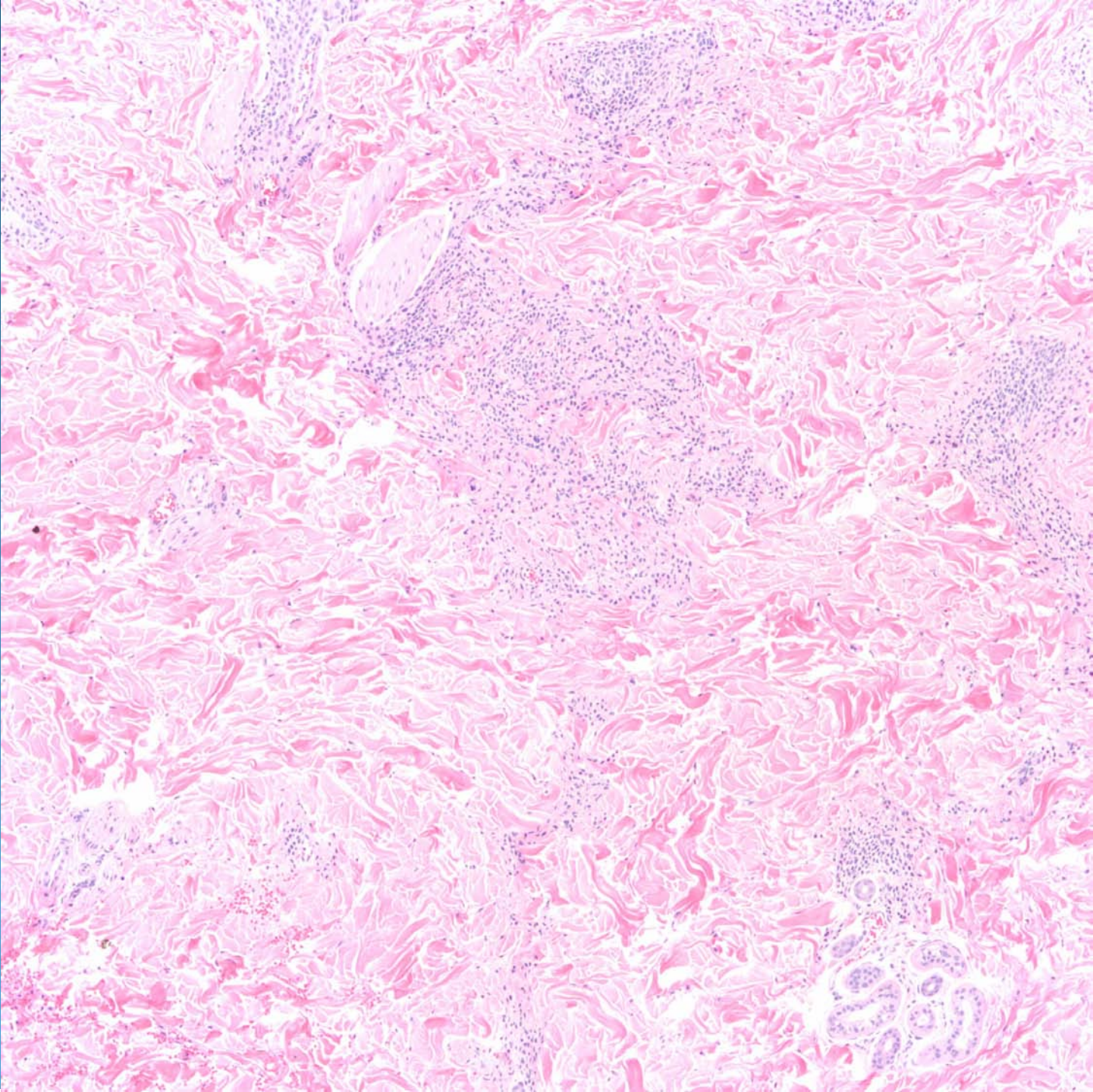


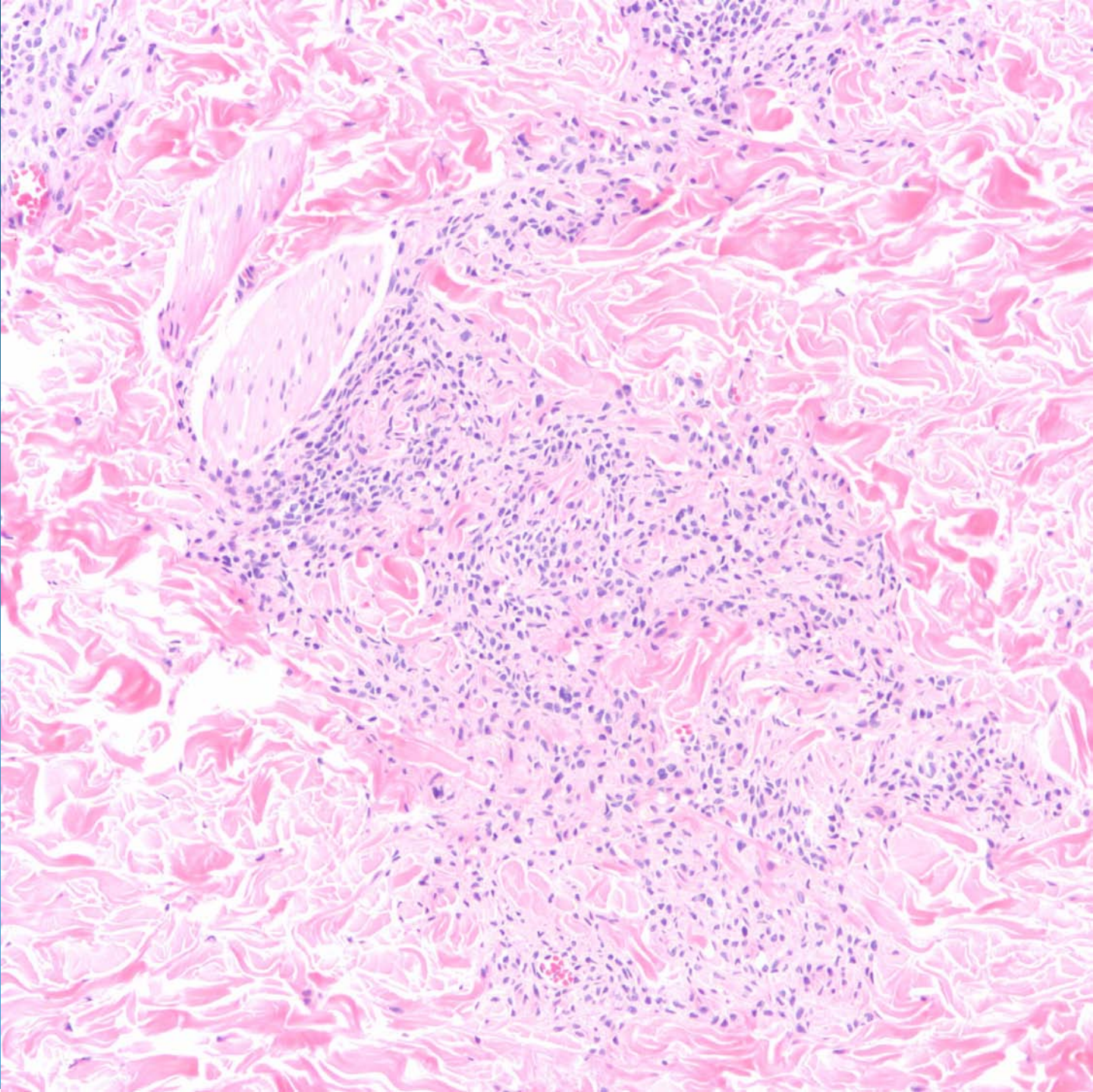
- Square biopsy sign with diffuse dermal fibrosis
- No atypia of fibroblasts
- May have increase in mucin ground substance
- Fibroblasts positive for F. XIIIa and CD34
- DDX: Morphea, Scleromyxedema

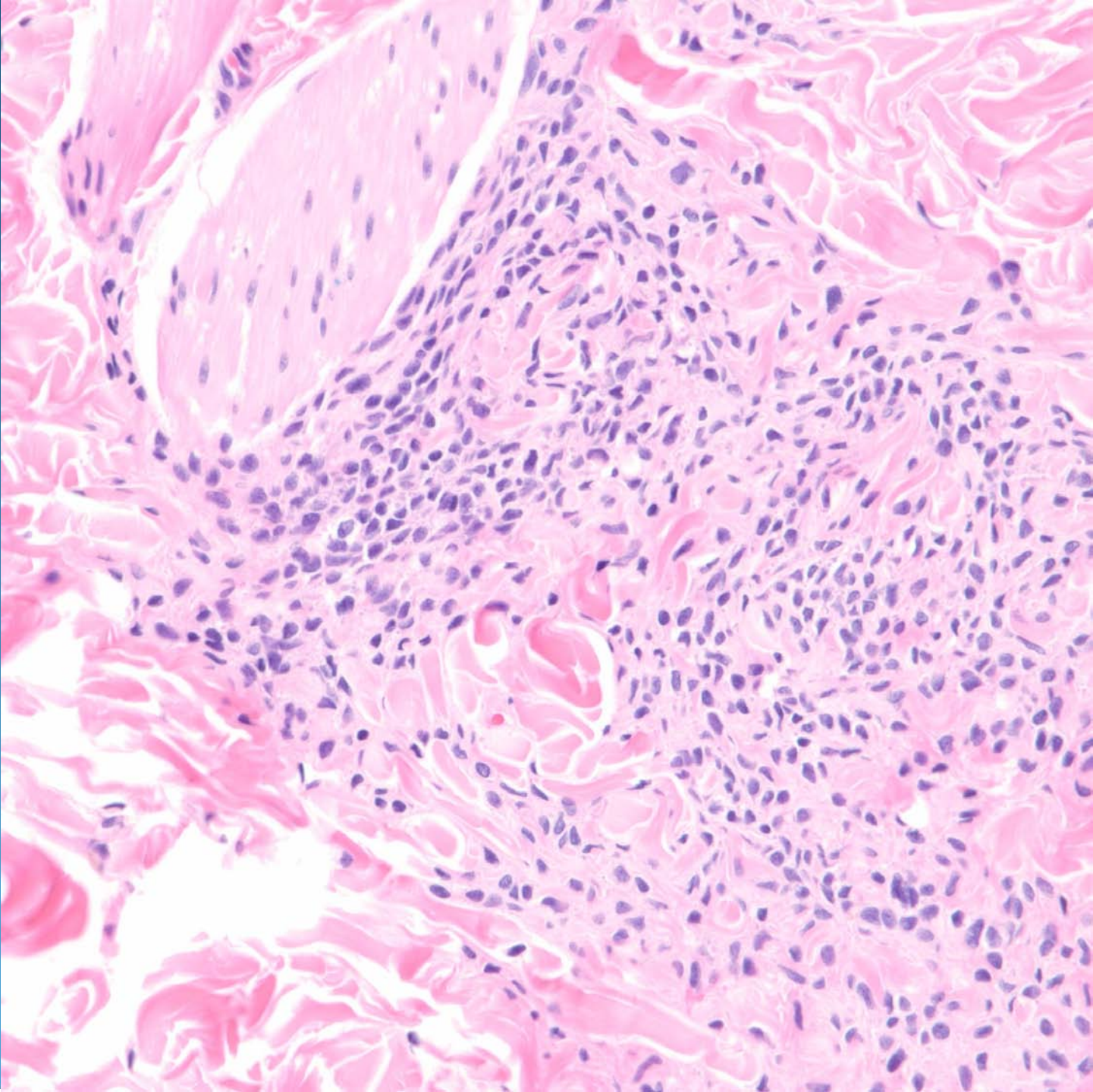


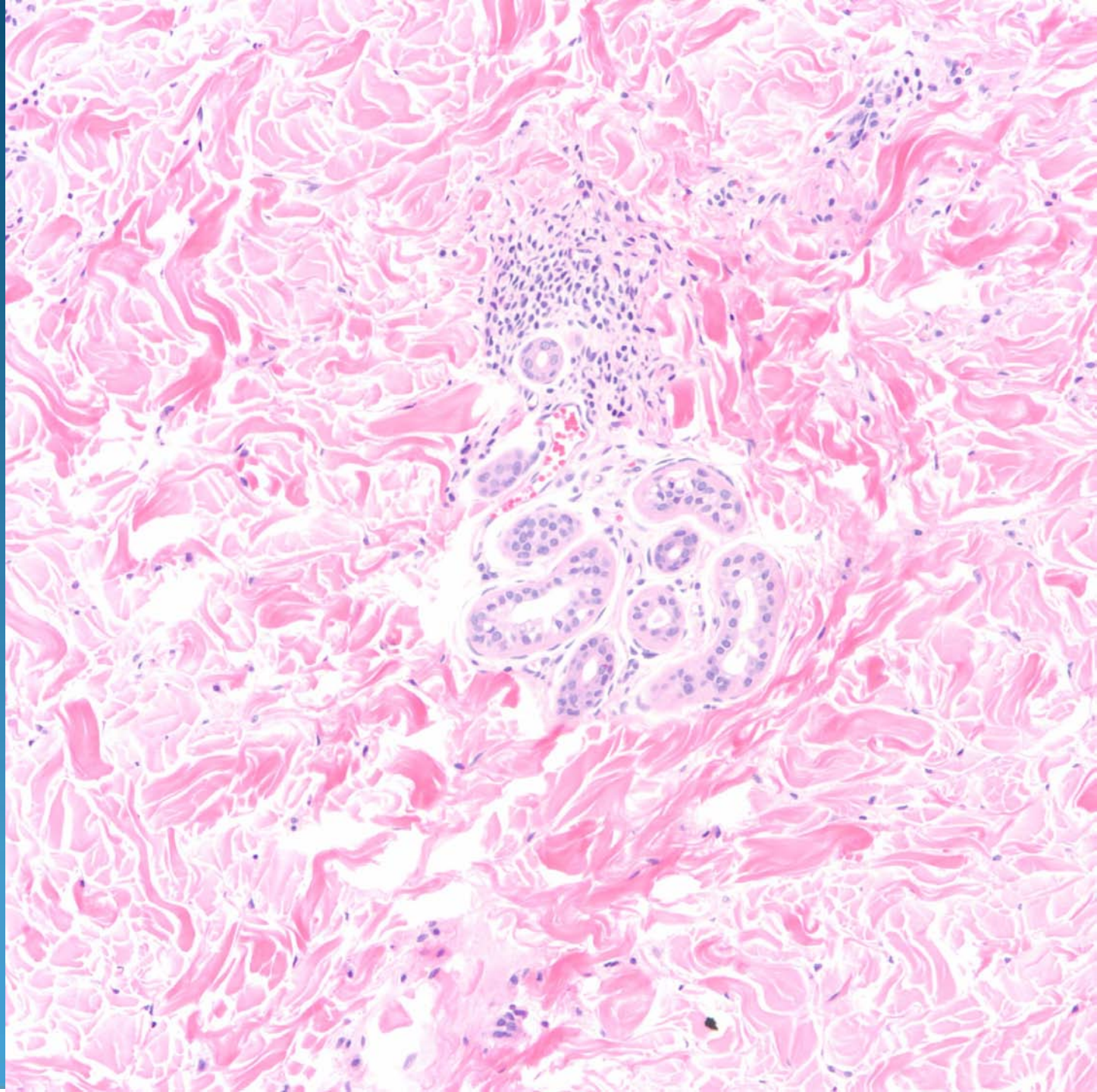


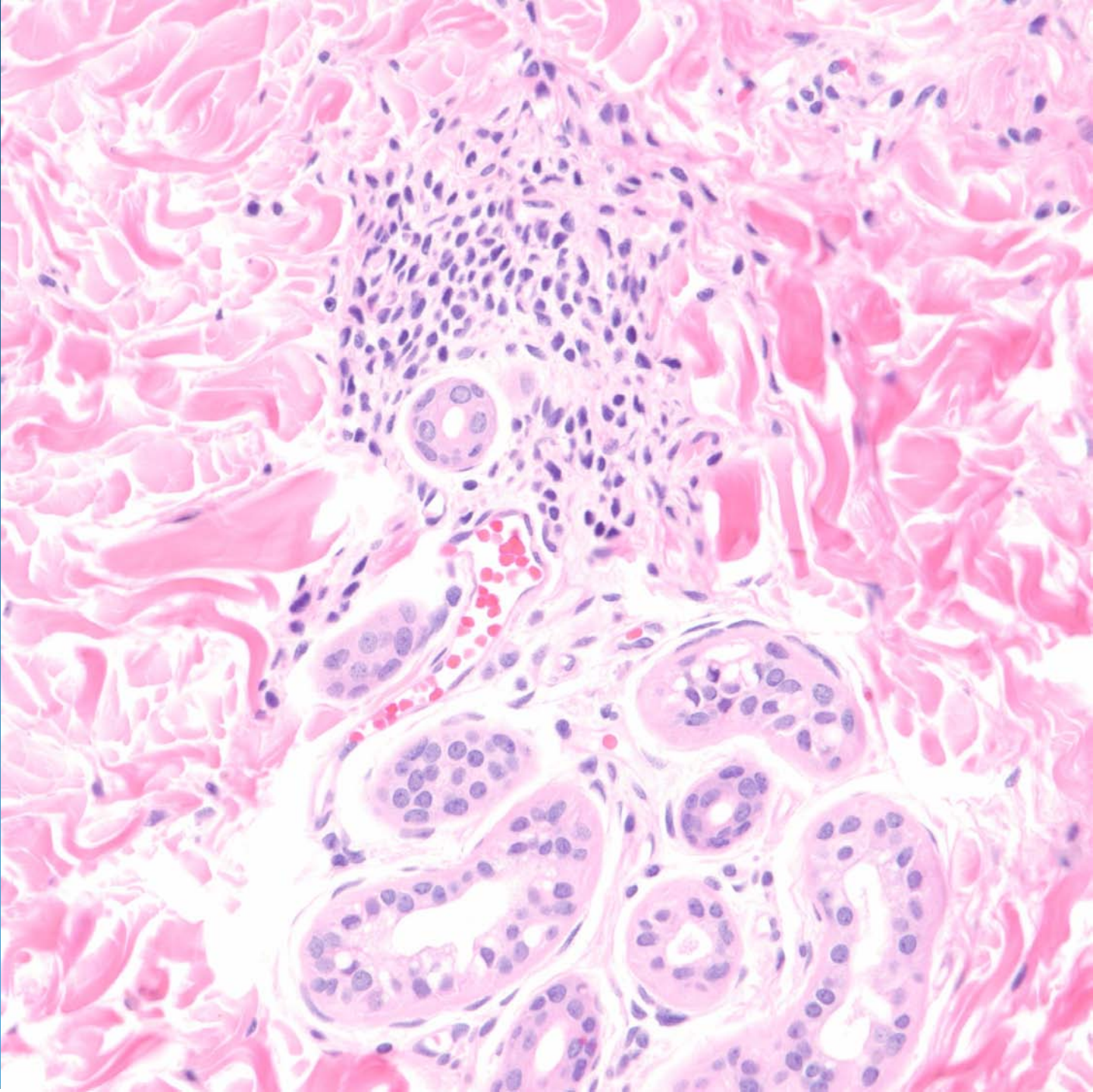






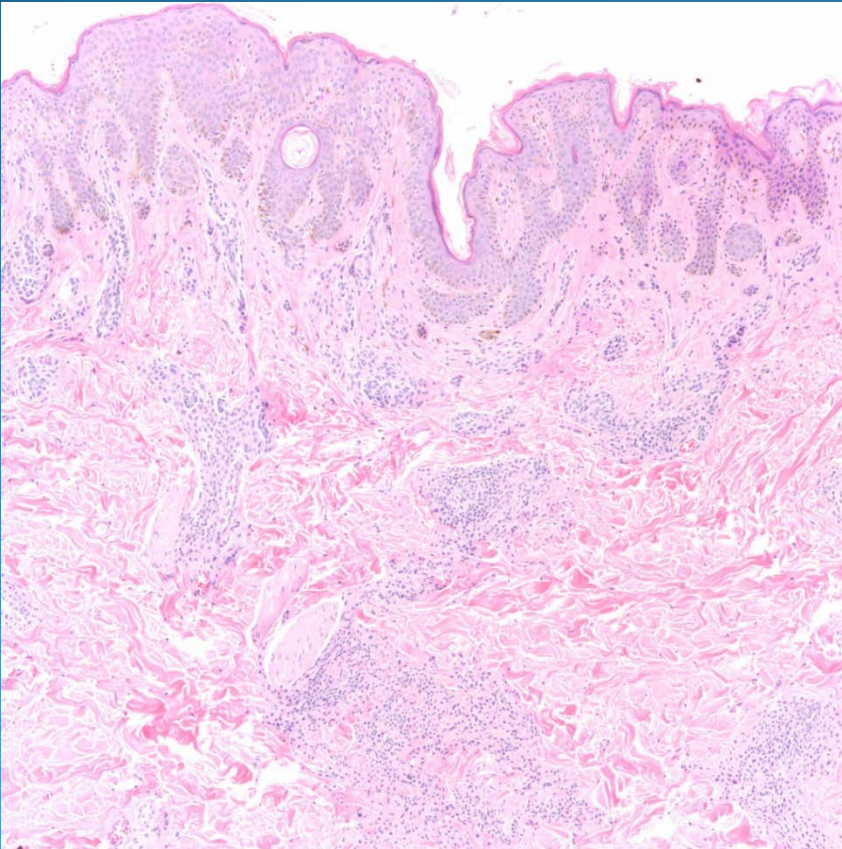




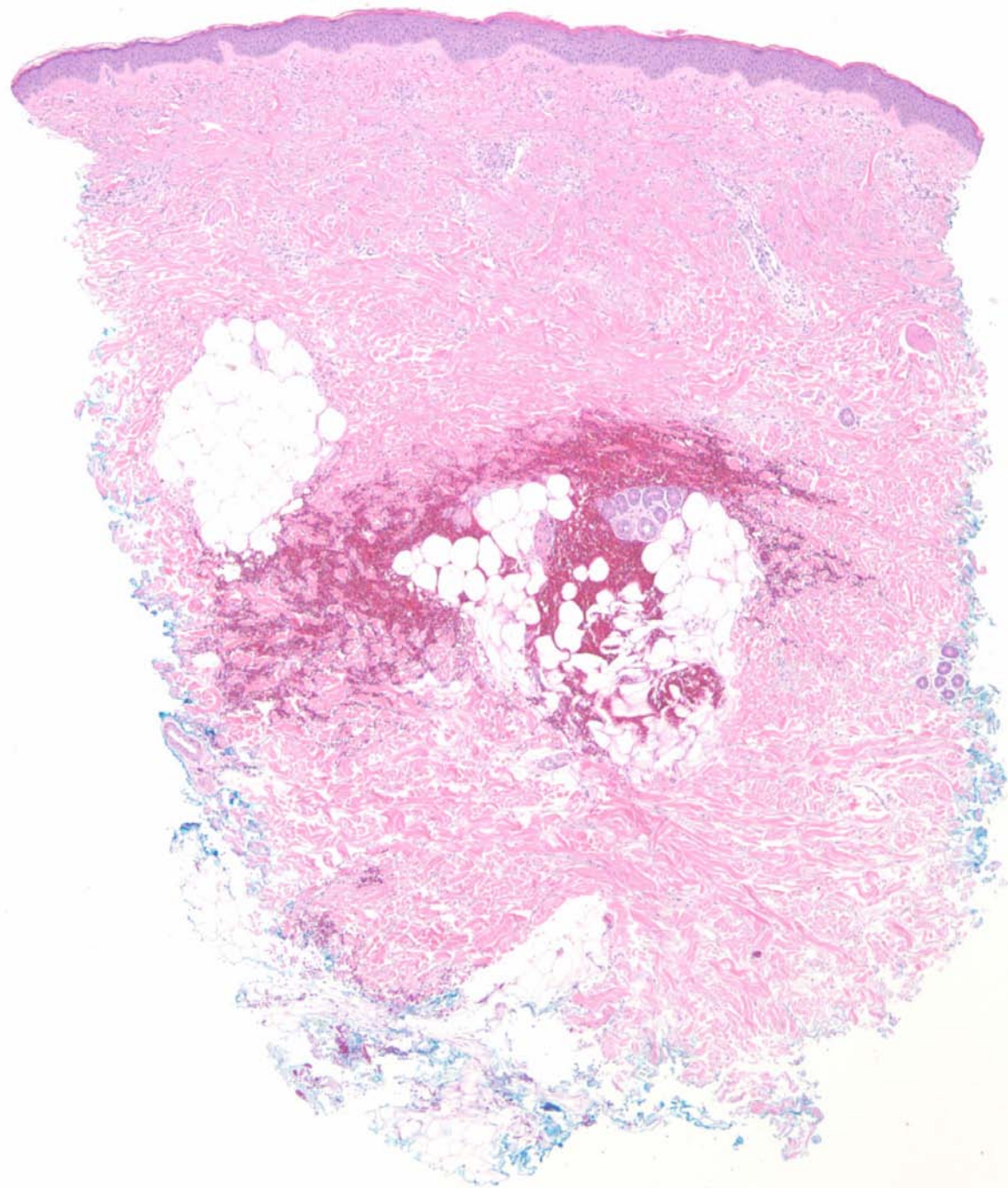


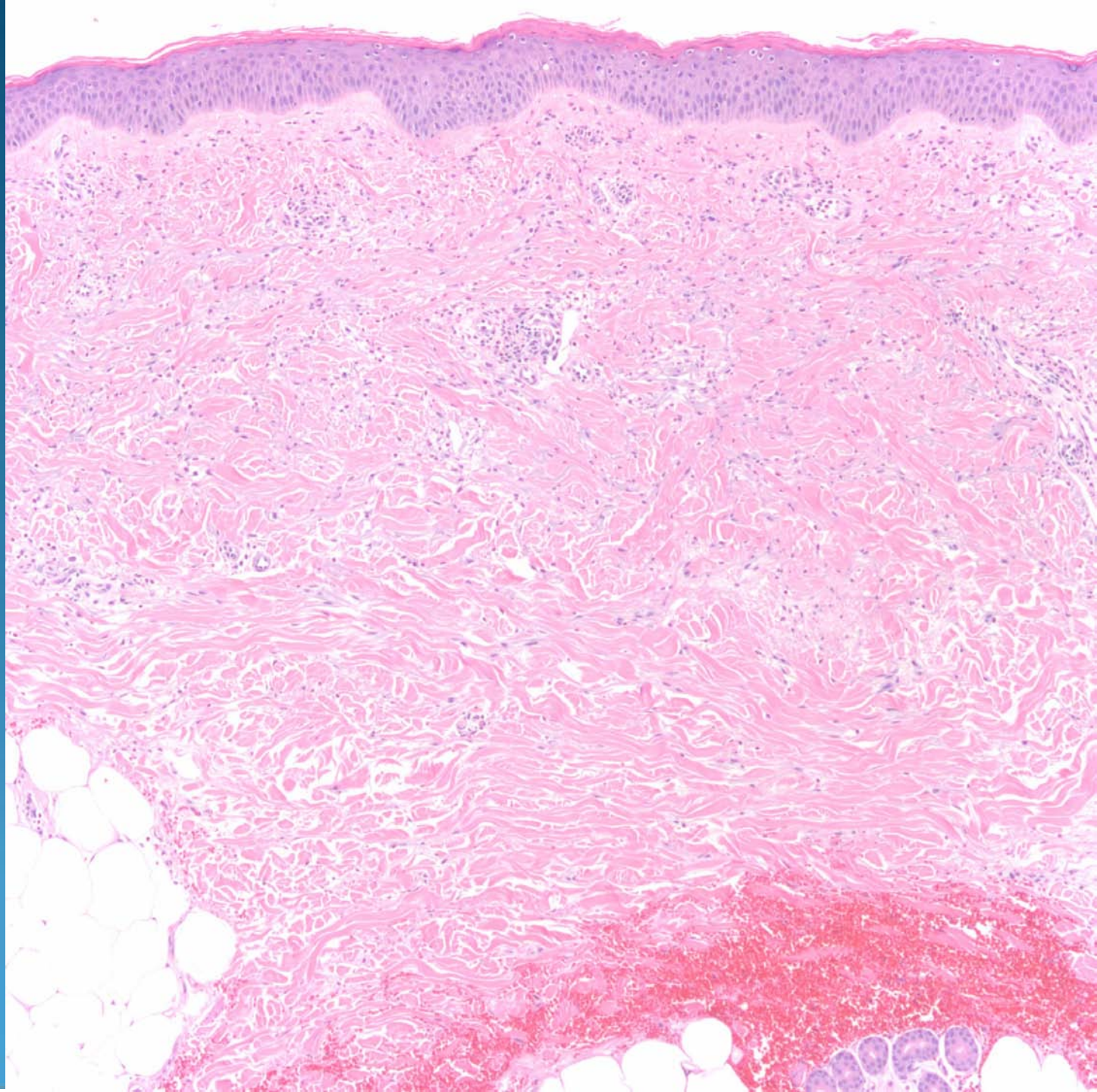
# Congenital Melanocytic Nevus

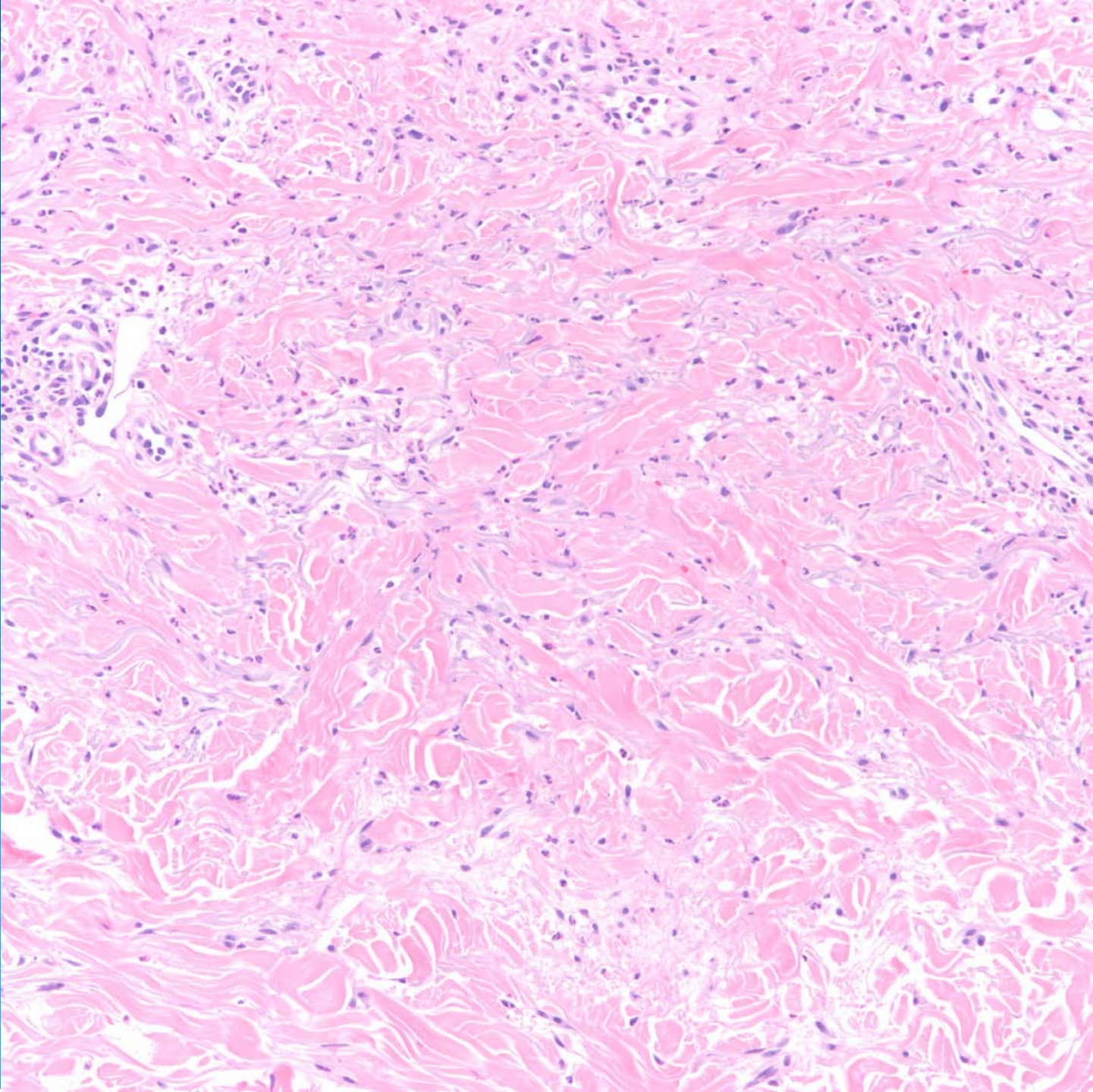
# Pearls

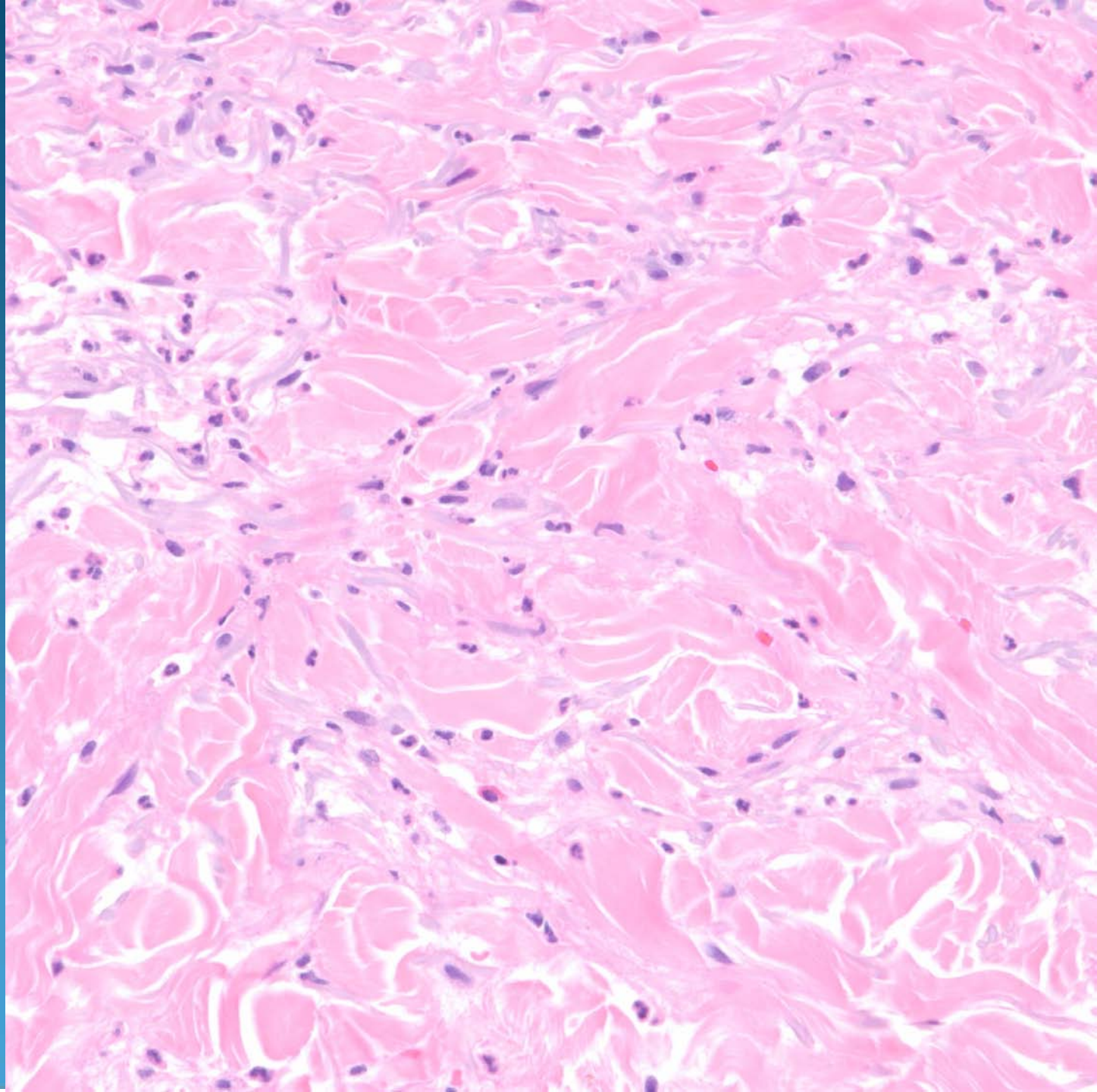


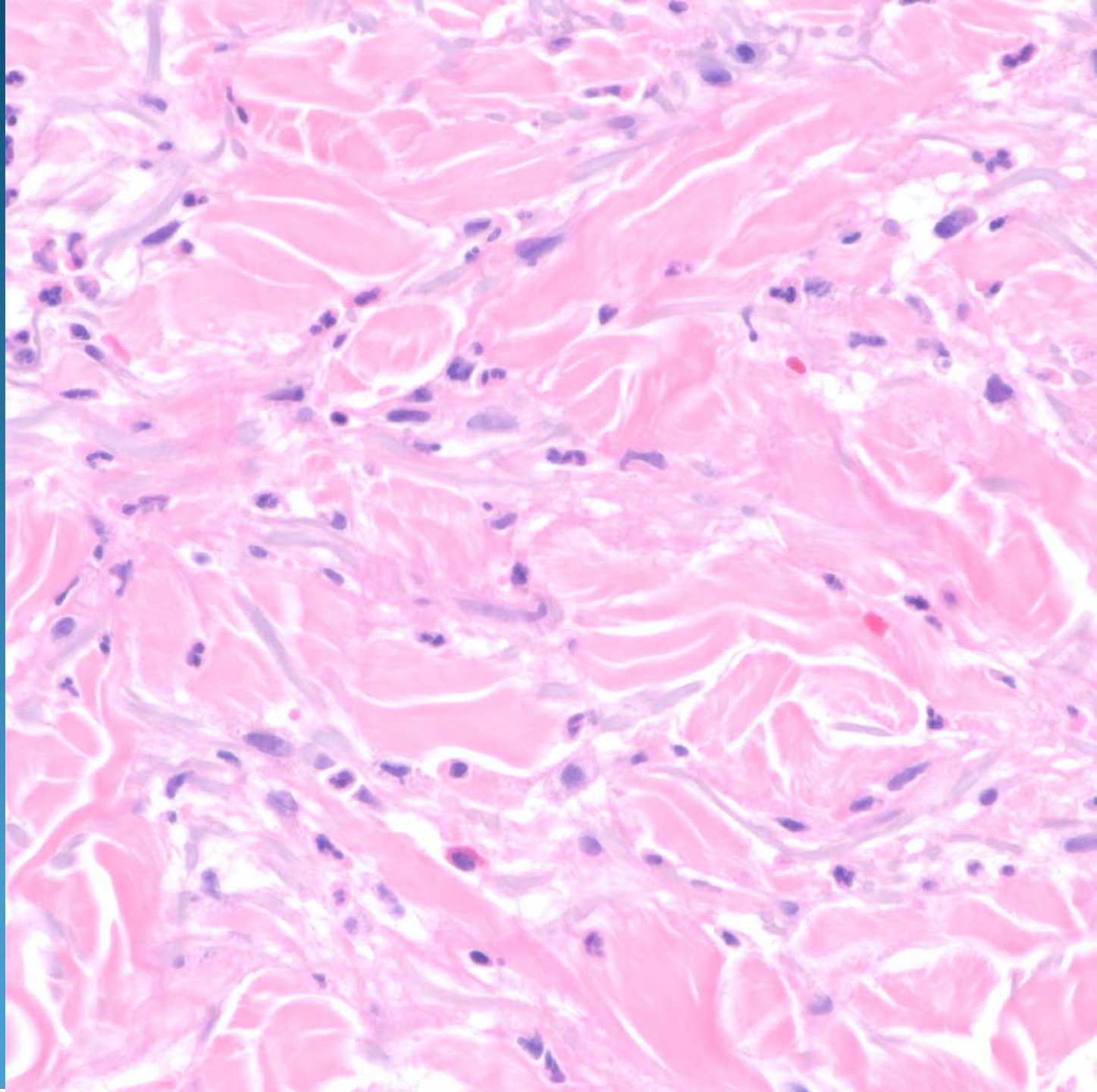
- Benign melanocytic nevus with variable compound or intradermal presentations
- Usually not symmetrical with splaying of collagen fibers, extension into adnexal structures, and arrector pilae muscles
- Bland nuclear cytology with maturation





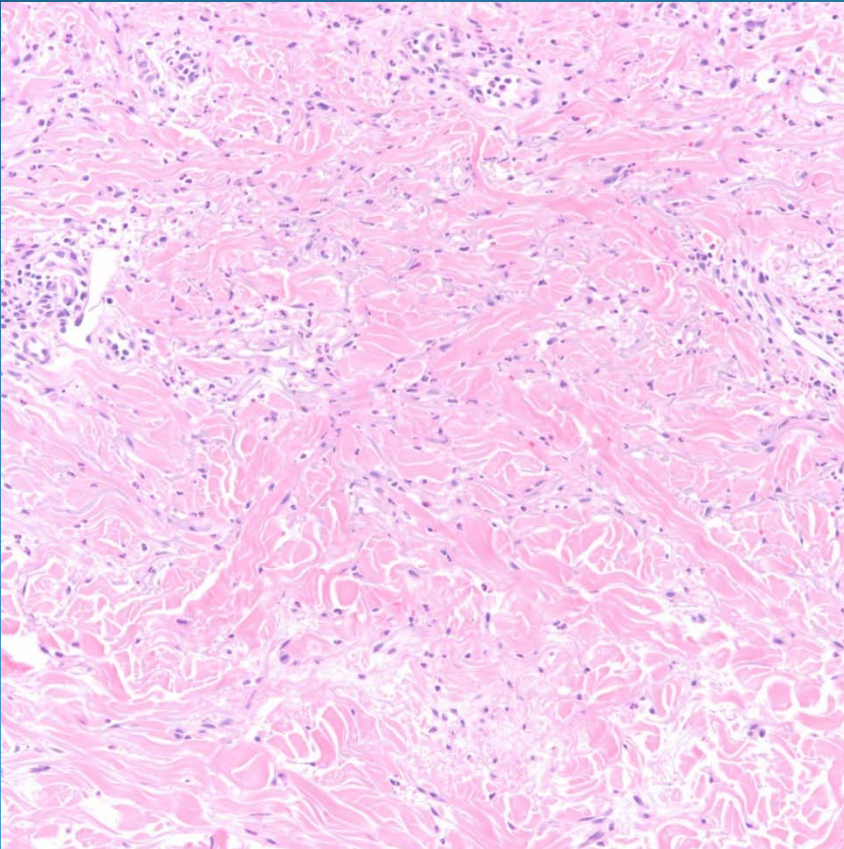




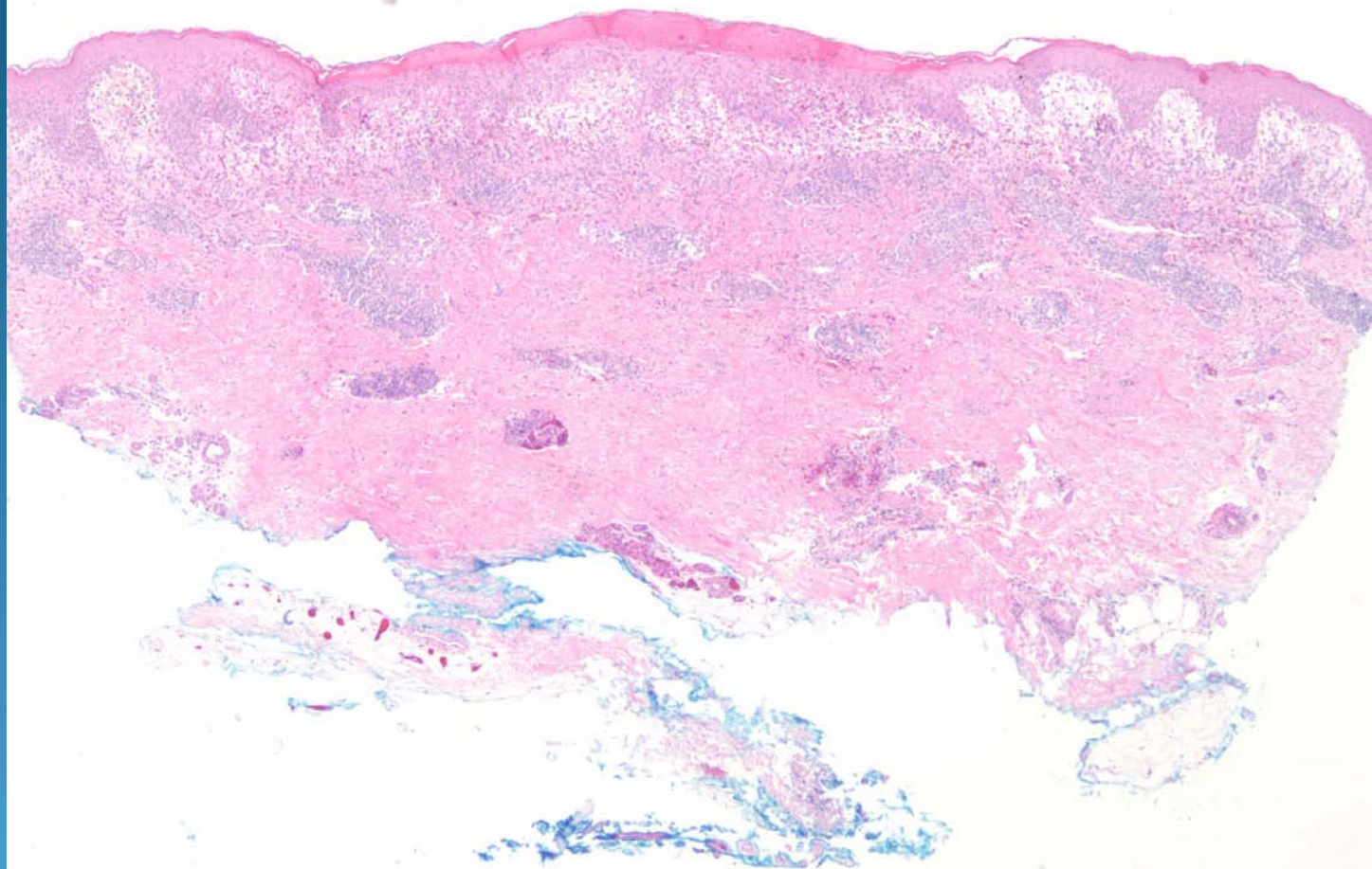


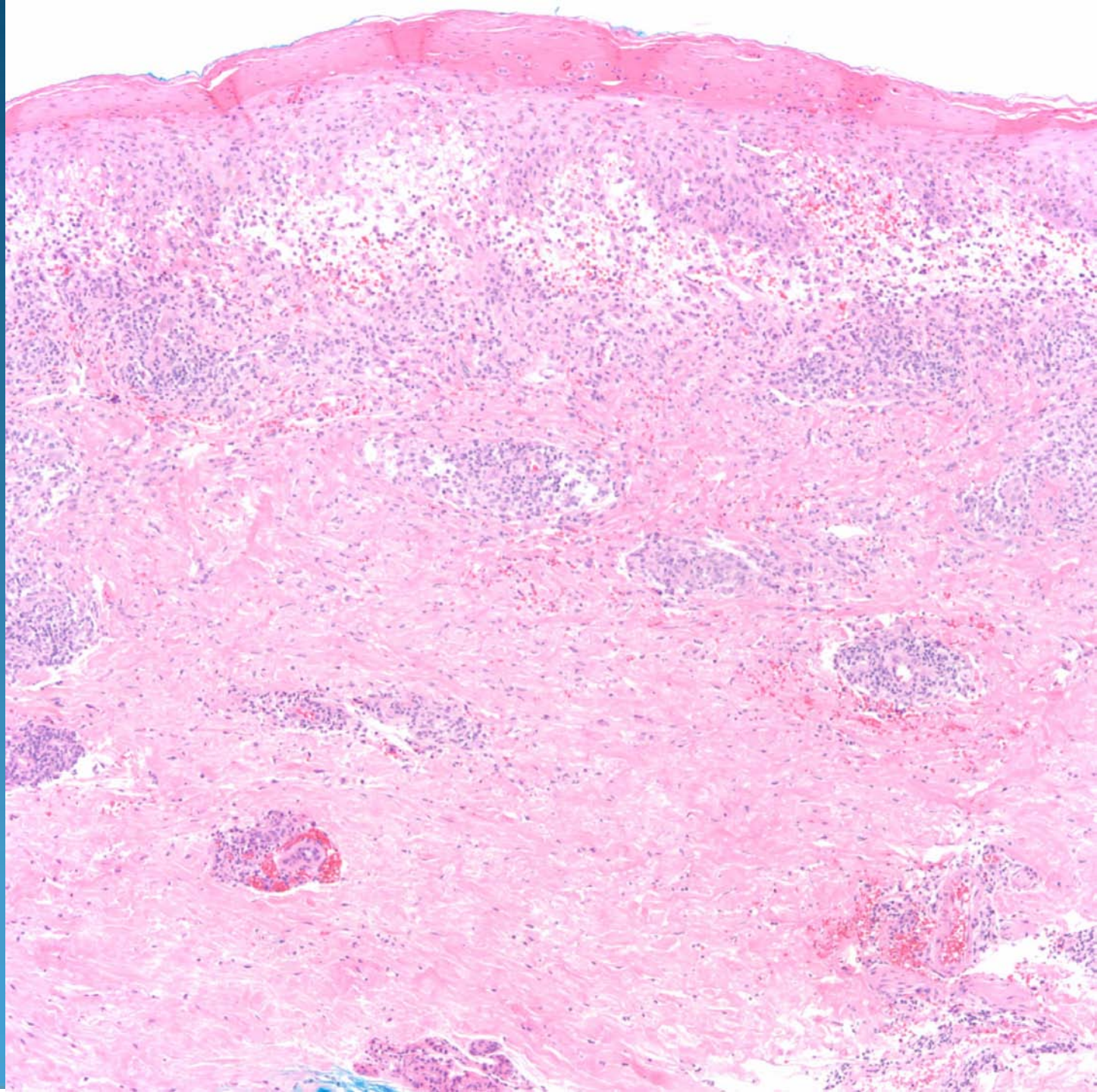
# Rheumatoid Neutrophilic Dermatosis

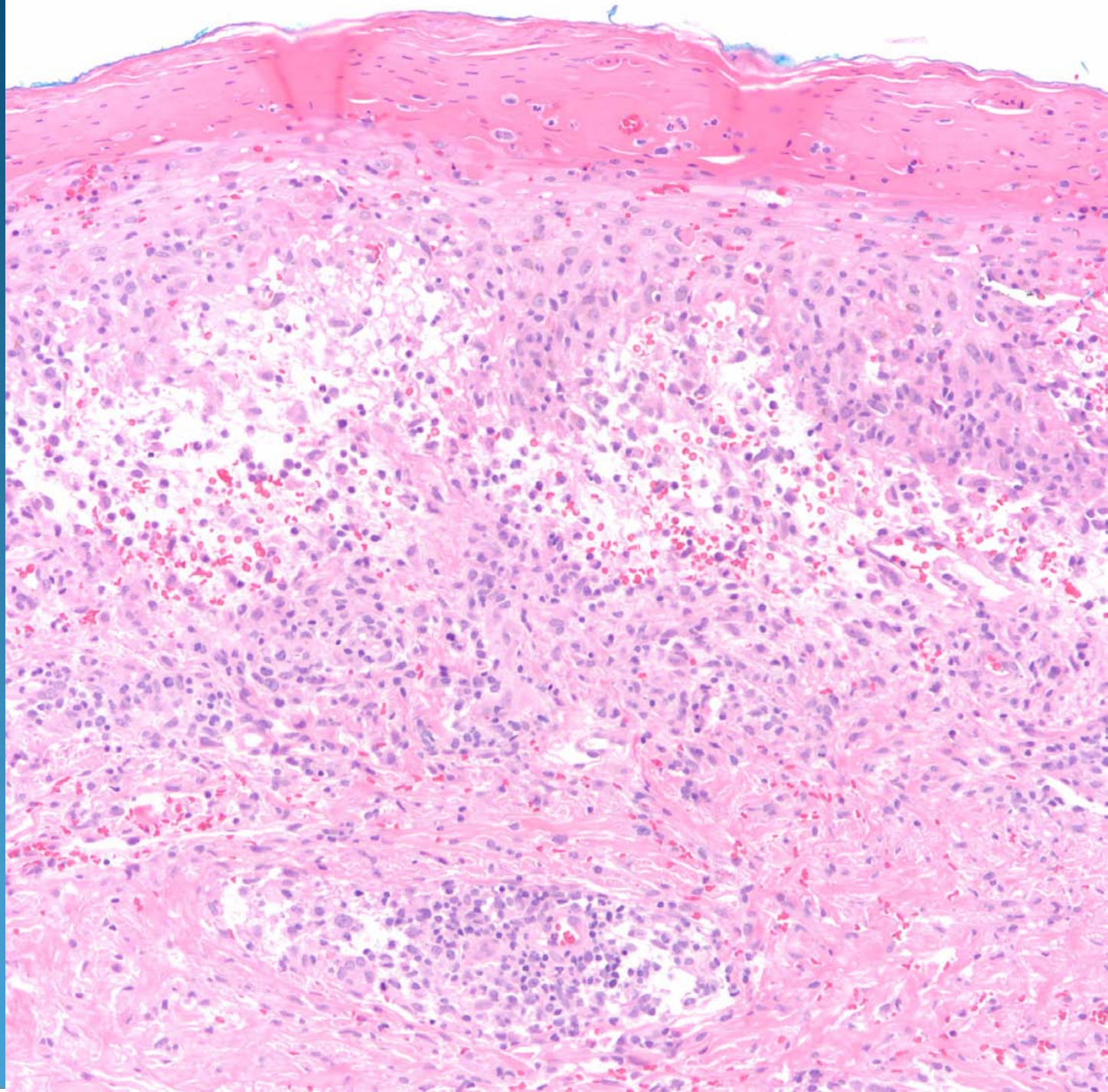
# Pearls

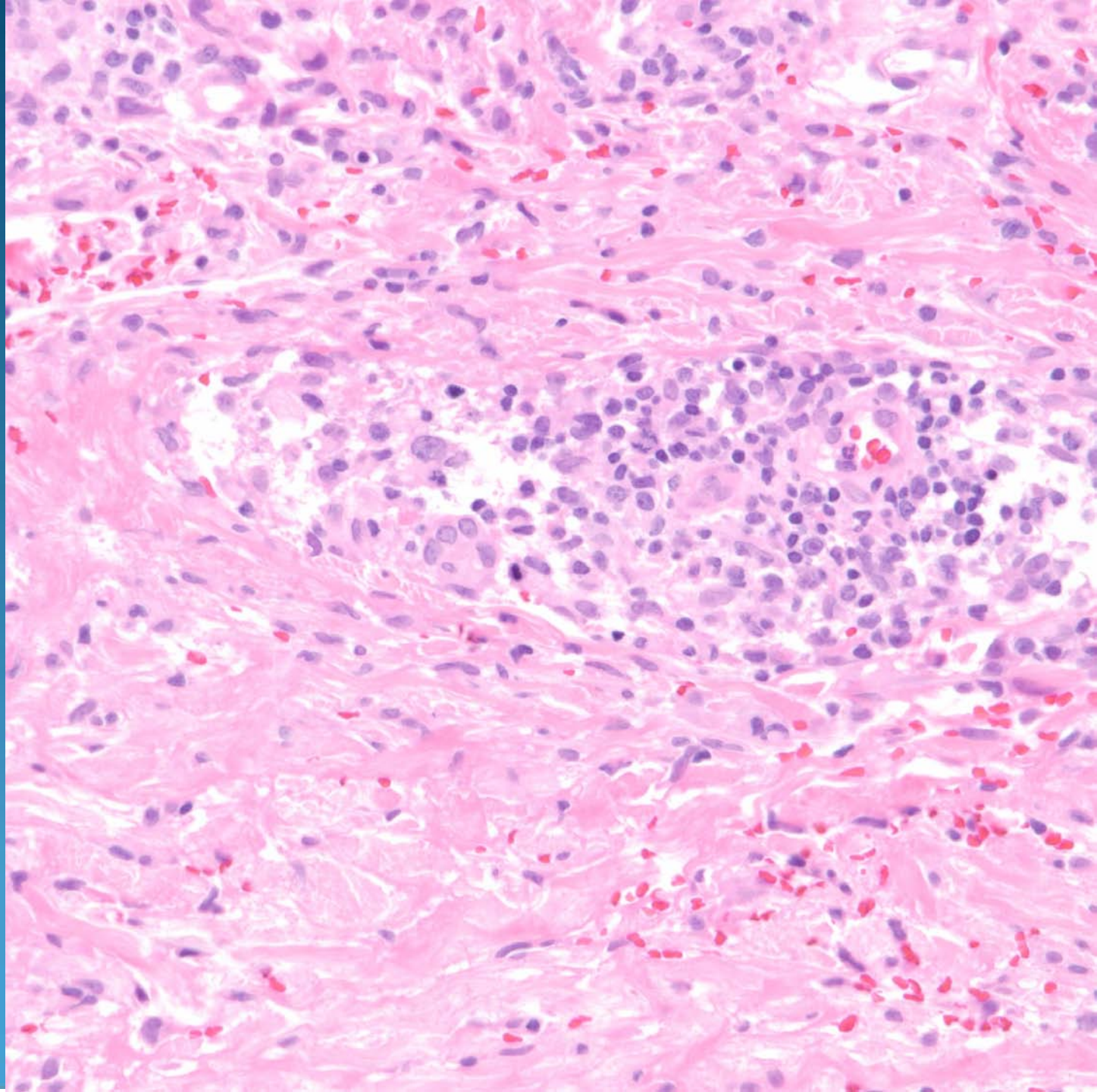


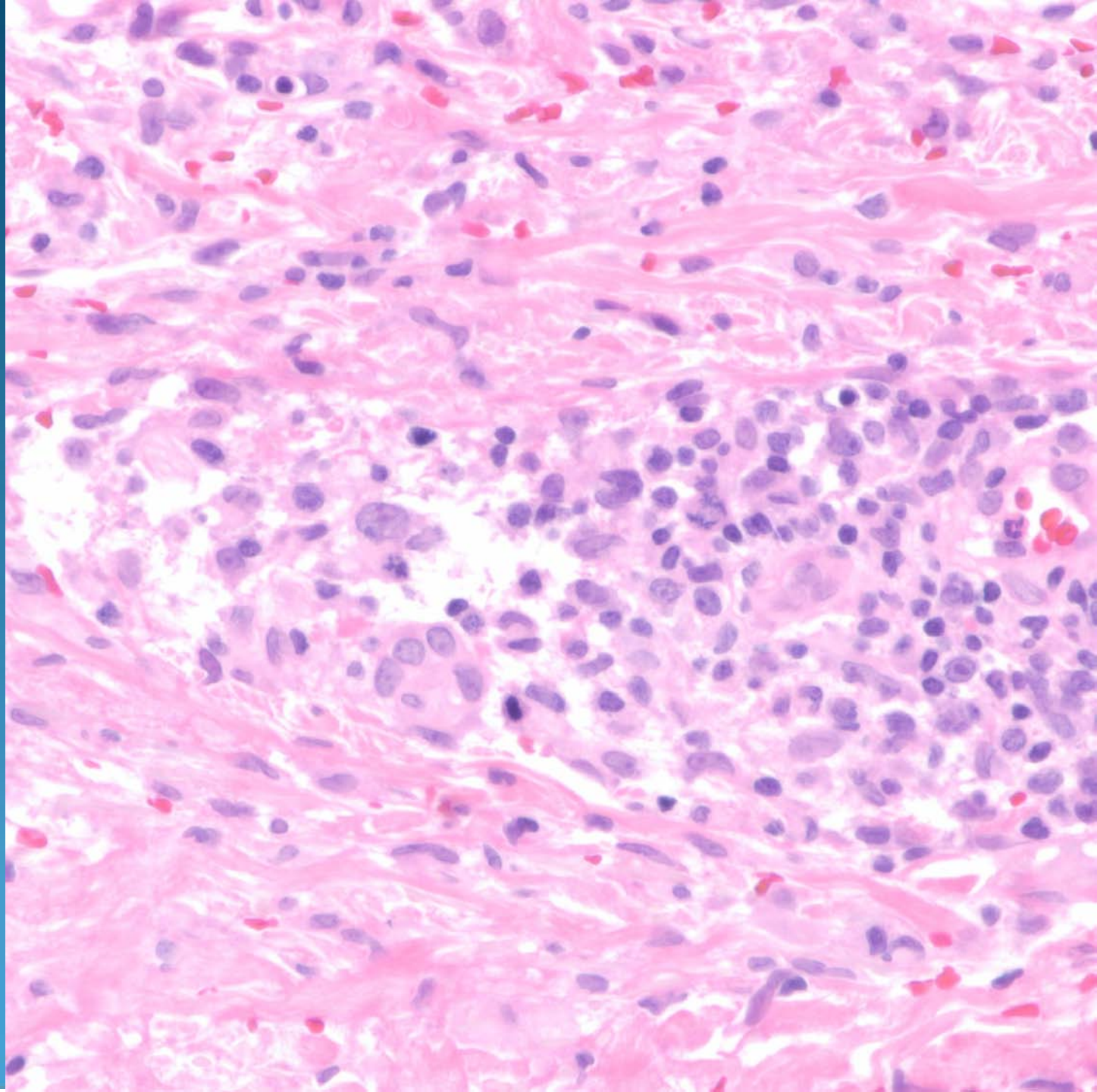
- Nodular and diffuse collection of neutrophils
- No vasculitis
- DDX: Neutrophilic dermatosis-rule out Sweet's, pyoderma gangrenosum, bowel bypass syndrome, Sweet's-like hypersensitivity reaction



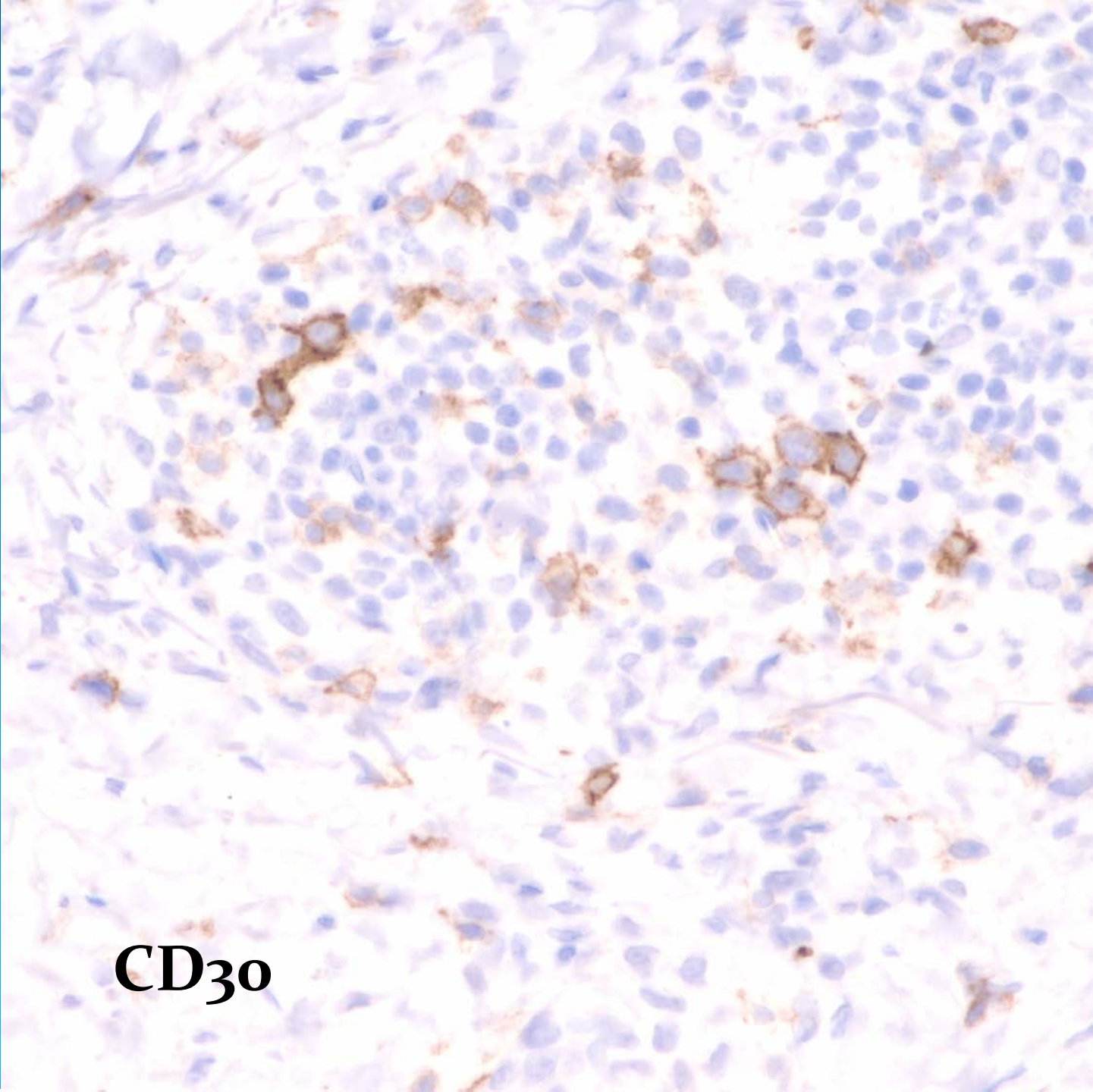






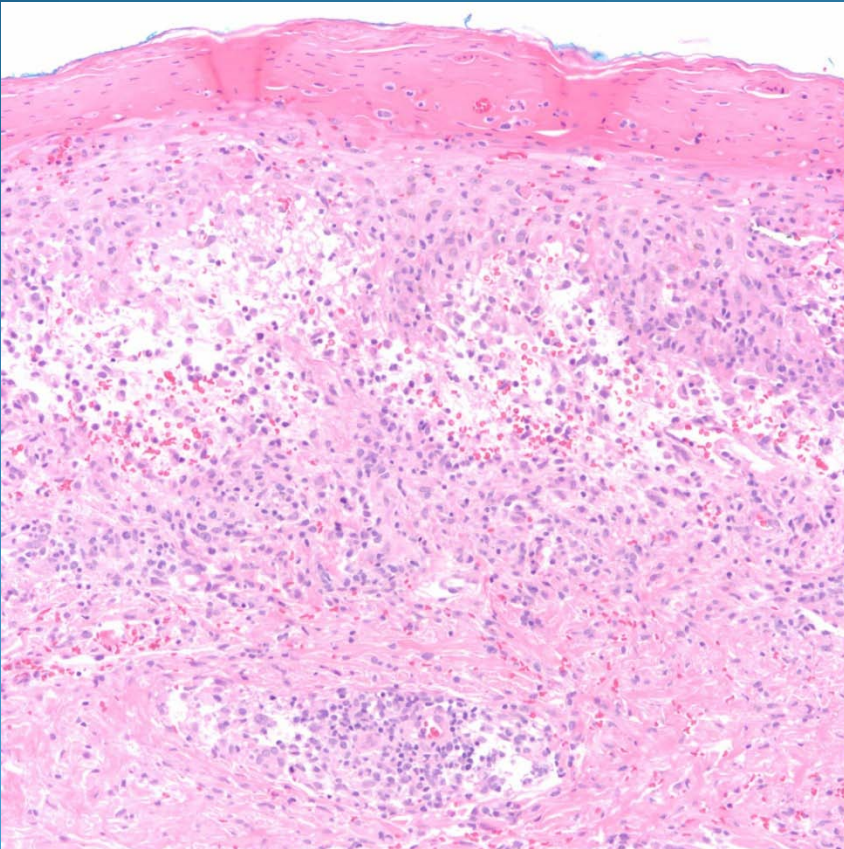


# Lymphomatoid Papulosis



**CD30**

# Pearls



- Mixed inflammatory cell infiltrate, often lichenoid
- High power look for atypical cells with cerebriform or Hodgkin-like changes
- Confirm with CD30
- DDX: Anaplastic Large cell lymphoma CD30+ will have infiltrate consisting predominately of atypical cells